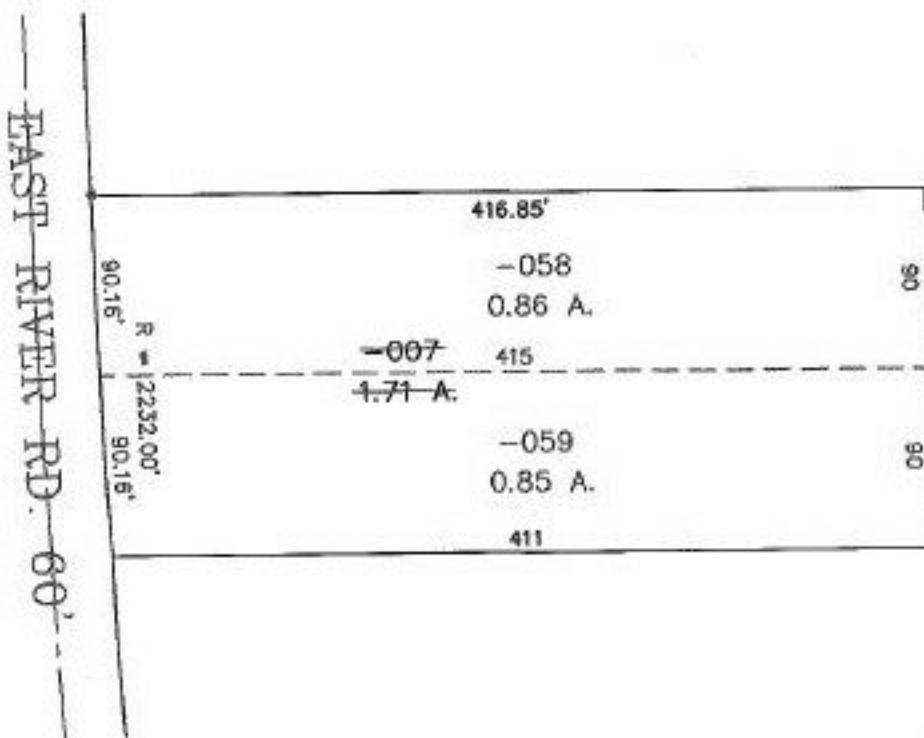


PARENT PARCEL: 03-00-074-104-007

CHILD PARCEL: 03-00-074-104-058 & -059

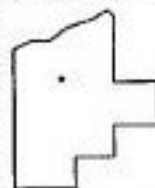
STARTING POINT: BEGINNING AT AN I.P. IN THE EAST LINE OF E. RIVER RD. AT THE
N.W. CORNER OF LAND CONVEYED TO BODNAR

NO. 22699



TJ
4-30-99

PRIOR INSTR: DV 517/442
PRIOR INSTRUMENT: DV 1227/808
PRIOR INSTRUMENT: DV 1227/810



SPLITS/DEEDS PROCESSED

LORAIN COUNTY TAX MAP DEPARTMENT
226 MIDDLE AVE. ELYRIA, OHIO

SURVEYED BY: C.T. BIGGS
CLOSURE: CAN'T RUN
MAP PAGE(S): 03-00-073-A
APPROVED BY: TJS DATE: 11/16/98
SCALE: 1" = 100'