

PARENT PARCEL: 18-00-022-103-011, & -012

CHILD PARCEL: ~~XX-XX-XXX-XXX-XXX~~

STARTING POINT: EAST LINE OF FOREST ST. & S.W. CORNER OF LAND CONVEYED TO LYMAN DAVIS

NO. 22698-D

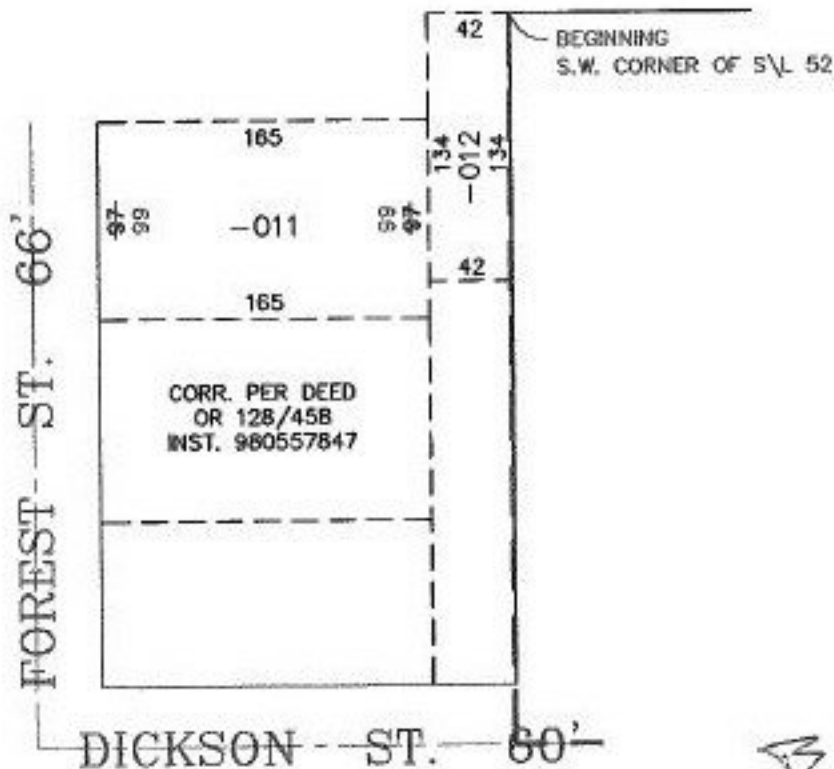


# FRONTAGE CORRECTION, & DEED CHECK

18-00-022-103-011 OK

~~97 X 165~~  
99 X 165

18-00-022-103-012 OK



*2-22-00*

PRIOR INSTRUMENT: OR 128/458

PRIOR INSTRUMENT: 980557847



## SPLITS/DEEDS PROCESSED

LORAIN COUNTY TAX MAP DEPARTMENT  
226 MIDDLE AVE. ELYRIA, OHIO

SURVEYED BY: NONE

CLOSURE: CAN'T RUN

MAP PAGE(S): 18-00-022-A

APPROVED BY: TJS DATE: 11/06/98

SCALE: 1" = 100'