

PARENT PARCEL: 06-26-082-000-008

CHILD PARCEL: NONE

STARTING POINT: S.W. LINE OF S\L 90 & NORTH LINE OF BROAD ST.

NO. 22681-A



## FRONTAGE & DEPTH CORRECTION

06-26-082-000-008

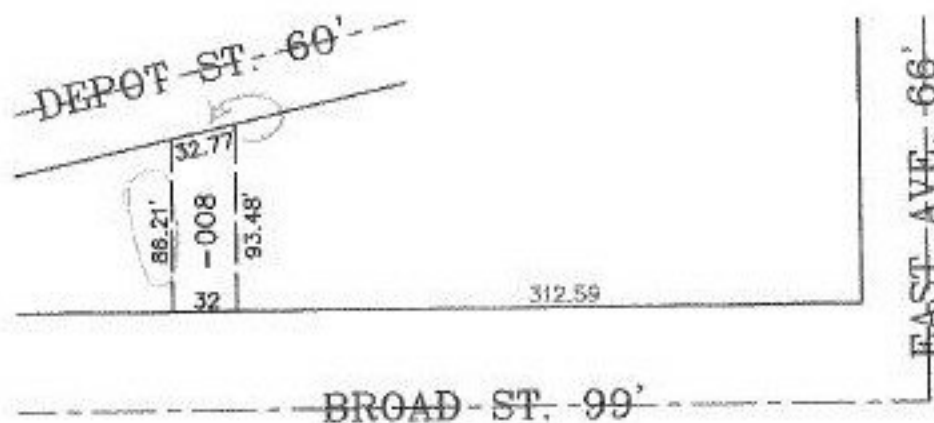
~~32 X 92~~

32 X 93.48

CORR. PER DEED

DV 1326/571

1" = 100'



SPLITS/DEEDS PROCESSED

LORAIN COUNTY TAX MAP DEPARTMENT  
226 MIDDLE AVE. ELYRIA, OHIO

SURVEYED BY: J.W. WARDEN

CLOSURE: CAN'T RUN

MAP PAGE(S): 6-120

APPROVED BY: TJS DATE: 10/09/98

SCALE: 1" = 100' PRIOR INSTRUMENT: DV 1326/571