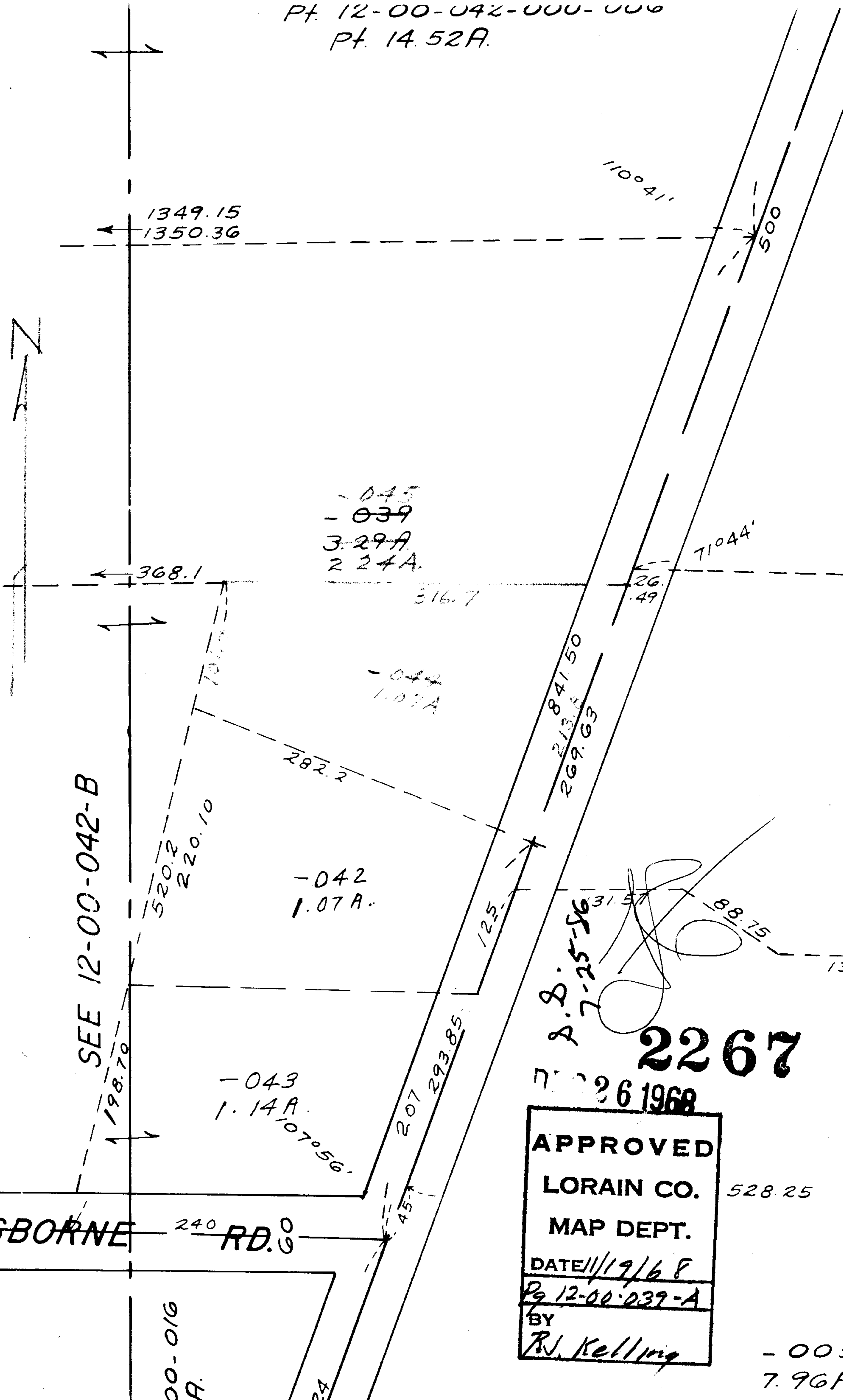


Pt. 12-00-042-000-000
Pt. 14.52A.



SEE 12-00-042-B

P. B. 7-25-56

2267

26 1968

APPROVED
LORAIN CO.
MAP DEPT.
DATE 11/19/68
Pg 12-00-039-A
BY
R. J. Kelling

OSBORNE RD.

00-016
A.

- 005
7.96A