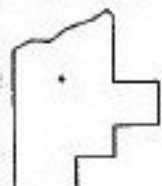
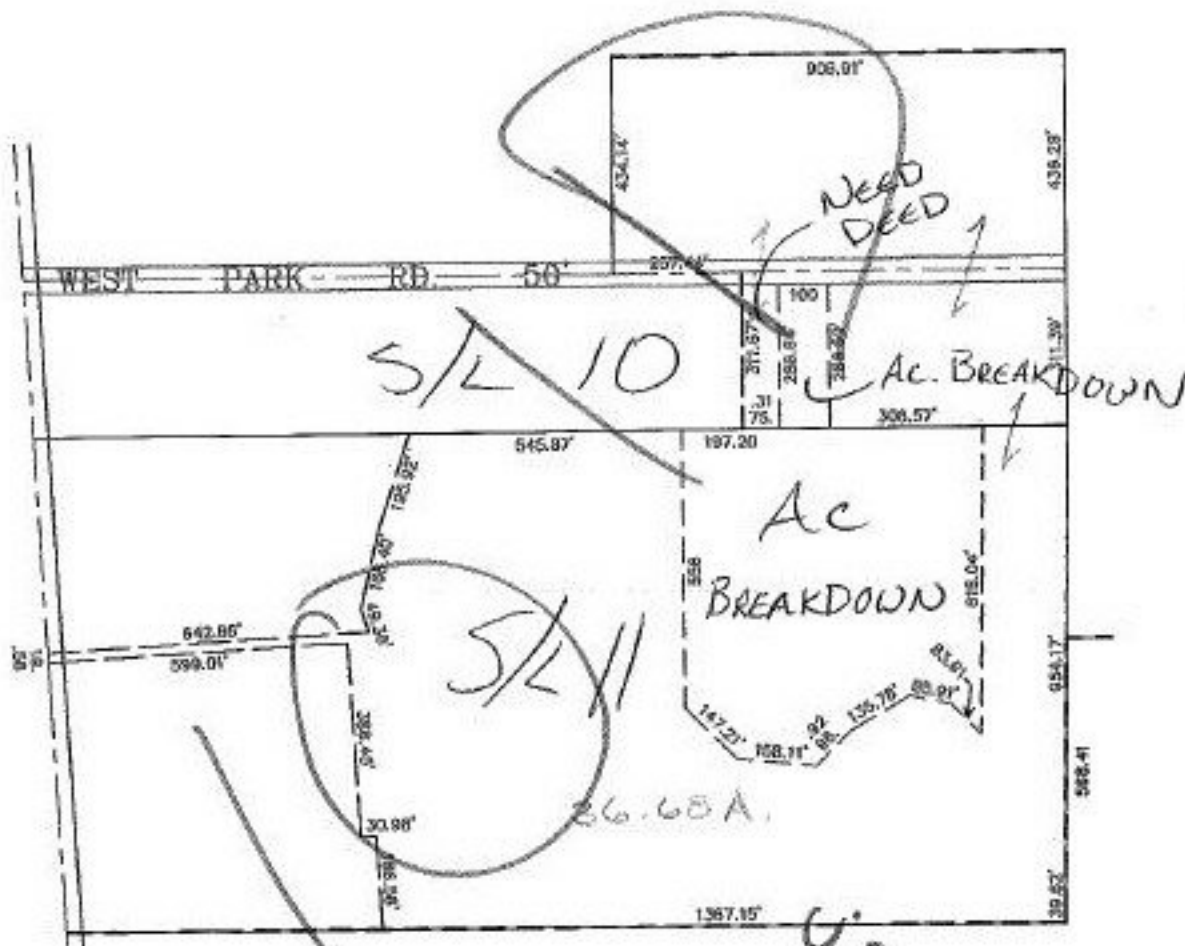


PARENT PARCEL: XX-XX-XXX-XXX-XXX

CHILD PARCEL: XX-XX-XXX-XXX-XXX

STARTING POINT: XXXXXX

NO. 22668



**SPLITS/DEEDS PROCESSED**  
 LORAIN COUNTY TAX MAP DEPARTMENT  
 226 MIDDLE AVE. ELYRIA, OHIO

SURVEYED BY: XXXXXXXXXXXX  
 CLOSURE: XXXXXX  
 MAP PAGE(S): XX-XX-XXX  
 APPROVED BY: XXX DATE: XX/XX/XX  
 SCALE: 1" = 400' PRIOR INSTRUMENT: DV XXXX/XXX