

PARENT PARCEL: 01-00-004-115-005

CHILD PARCEL: 01-00-004-115-008, 009, 010

STARTING POINT: N ROW LINE OF LIBERTY AVENUE & E LINE OF SUNNYSIDE BEACH SUBD.

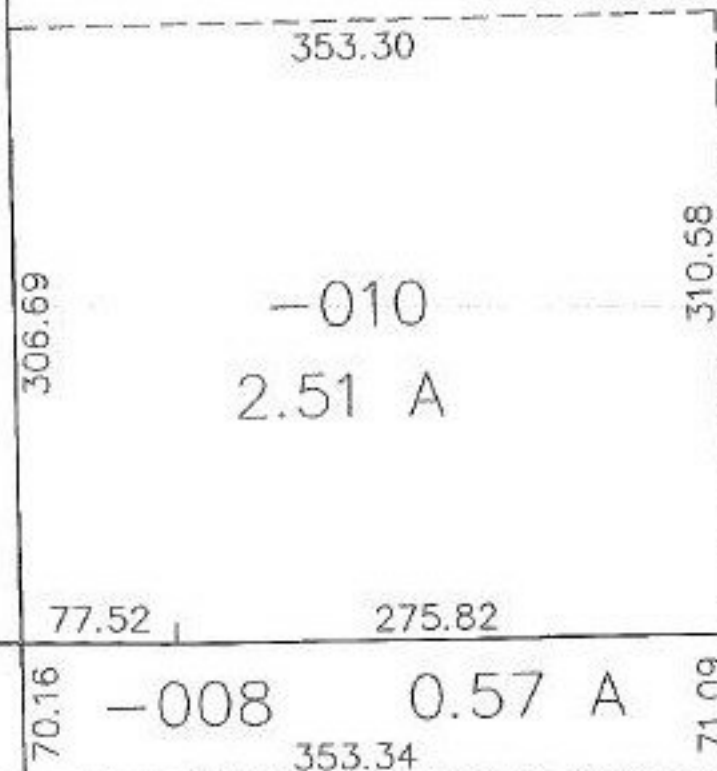
NO. 22667

NORTH ROW LINE OF LIBERTY AVENUE & THE
EAST LINE OF SUNNYSIDE BEACH SUBD.



--005--
-18.08-A--
--009--
-17.51-A-
-011

15.00 A



LIBERTY (U.S. 6) AVENUE



SPLITS/DEEDS PROCESSED
LORAIN COUNTY TAX MAP DEPARTMENT
226 MIDDLE AVE. ELYRIA, OHIO

SURVEYED BY: M G HUAA
CLOSURE: 0.06 / 10,000
MAP PAGE(S): 1-00-004-B
APPROVED BY: F. COLBERT DATE: 10/2/98
SCALE: 1" = 100' PRIOR INSTRUMENT: OR 31/9