

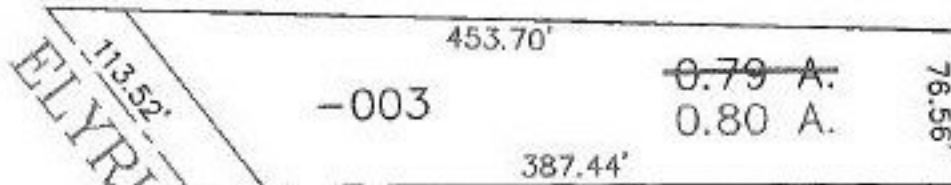
PARENT PARCEL: 16-00-003-105-003

CHILD PARCEL: NONE

STARTING POINT: CL OF ELYRIA - MEDINA RD. & S.W. CORNER OF GRAFTON REALY SUB. NO. 1

NO. 22658-X

AC. CORR.



AC. CORR. PER SURV.
RODGER G. SIMON



COPY

RS
2-22-00



SPLITS/DEEDS PROCESSED
LORAIN COUNTY TAX MAP DEPARTMENT
226 MIDDLE AVE. ELYRIA, OHIO

SURVEYED BY:	RODGER G. SIMON
CLOSURE:	0.02 : 10,000
MAP PAGE(S):	16-00-003-A
APPROVED BY:	IJS DATE: 09/24/98
SCALE:	1" = 100' PRIOR INSTRUMENT: NONE