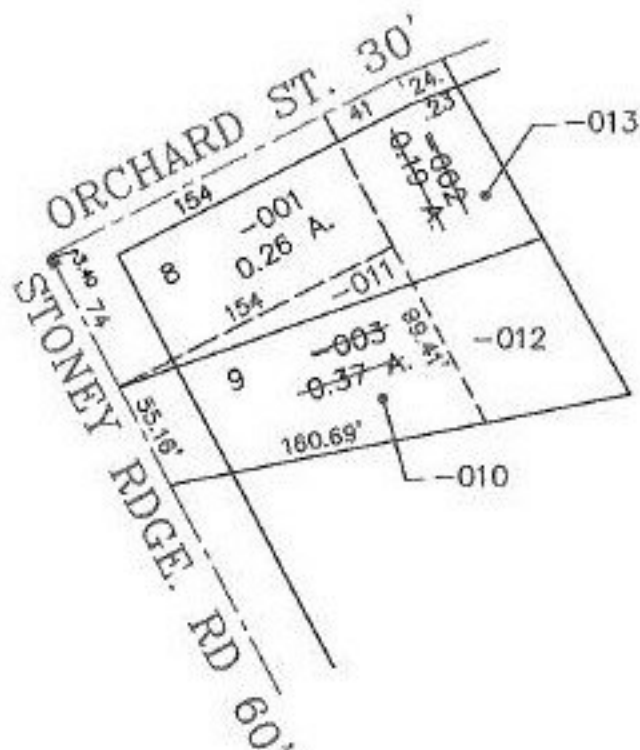


PARENT PARCEL: 04-00-010-118-002 & 003

CHILD PARCEL: 04-00-010-118-010 THRU 013

STARTING POINT: CL. OF ORCHARD ST. & CL. OF STONEY RDGE RD.

NO. 22641



NEW P.P.N.

-010
0.17 A.

-011
0.04 A.

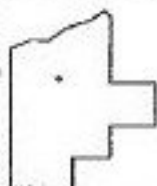
-012
~~0.20 A.~~ AC. CORR. PER SURV.
0.15 A. JOHN POZYWAK

-013
~~0.15 A.~~ AC. CORR. PER SURV.
0.13 A. JOHN POZYWAK

SEE DETAIL

JS
2-4-99

1 OF 2



SPLITS/DEEDS PROCESSED
LORAIN COUNTY TAX MAP DEPARTMENT
226 MIDDLE AVE. ELYRIA, OHIO

SURVEYED BY: JOHN POZYWAK
CLOSURE: 0.04 : 10.000
MAP PAGE(S): 04-00-010-G
APPROVED BY: IJS DATE: 09/14/98
SCALE: 1" = 100' PRIOR INSTRUMENT: 970493575