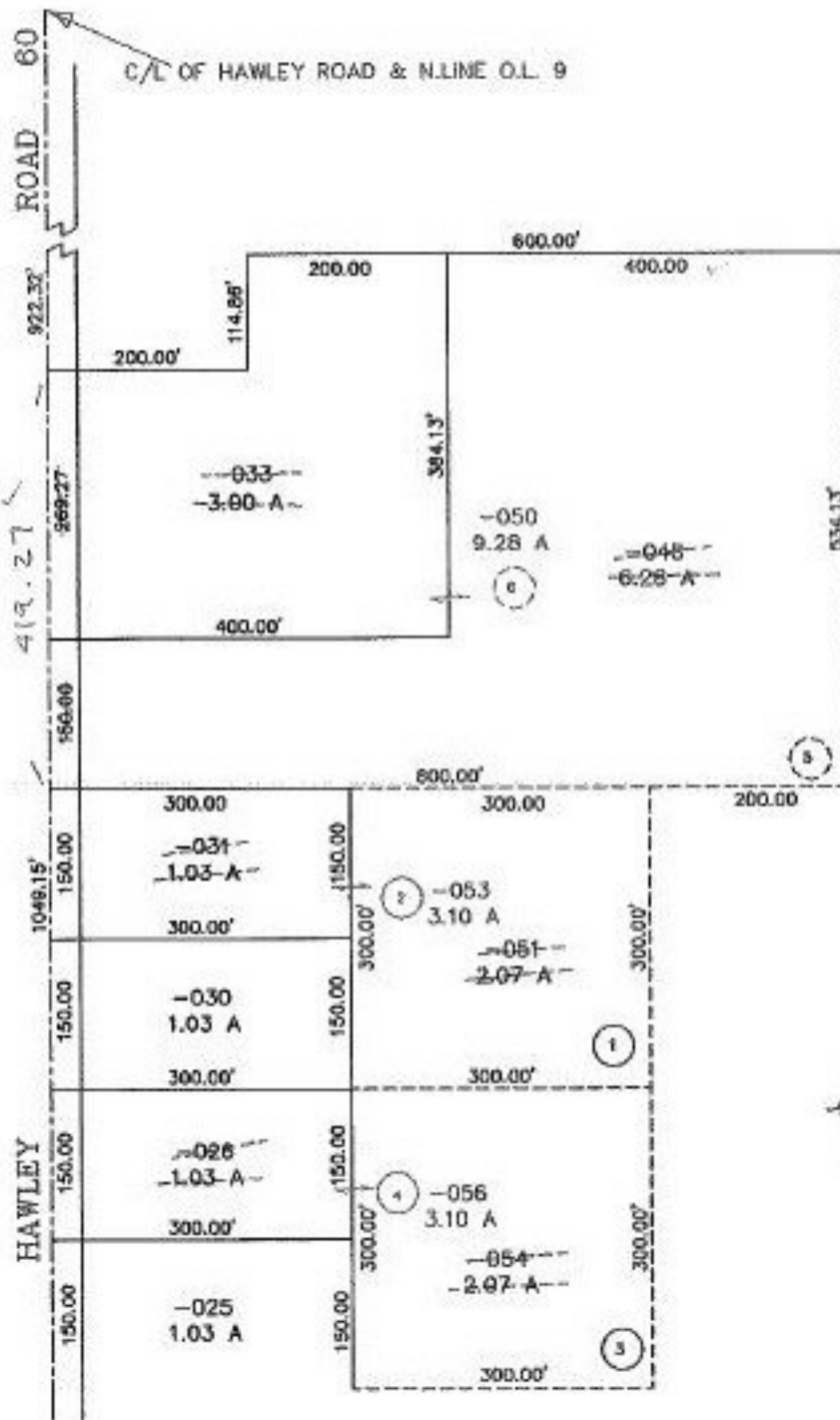


PARENT PARCEL: 18-00-009-000-026, 031, 033, 045

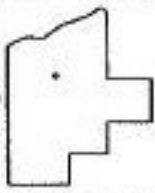
CHILD PARCEL: 18-00-009-000-048, 049, 050, 051, 052, 053, 054, 055, 056

STARTING POINT: C/L OF HAWLEY ROAD & N. LINE O.L. 9

NO. 22635



BP 1-2-99



**SPLITS/DEEDS PROCESSED**  
**LORAIN COUNTY TAX MAP DEPARTMENT**  
 226 MIDDLE AVE. ELYRIA, OHIO

SURVEYED BY: RODGER G SIMON  
 CLOSURE: 0.00 / 10.000  
 MAP PAGE(S): 18-D  
 APPROVED BY: F. COLBERT DATE: 9/3/98  
 SCALE: 1" = 200' PRIOR INSTRUMENT: OR242/183