

PARENT PARCEL: 06-25-007-000-133

CHILD PARCEL: 06-25-007-000-237, 238

STARTING POINT: C/Ls TERNES AVENUE * REASER COURT

NO. 22633

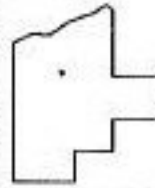
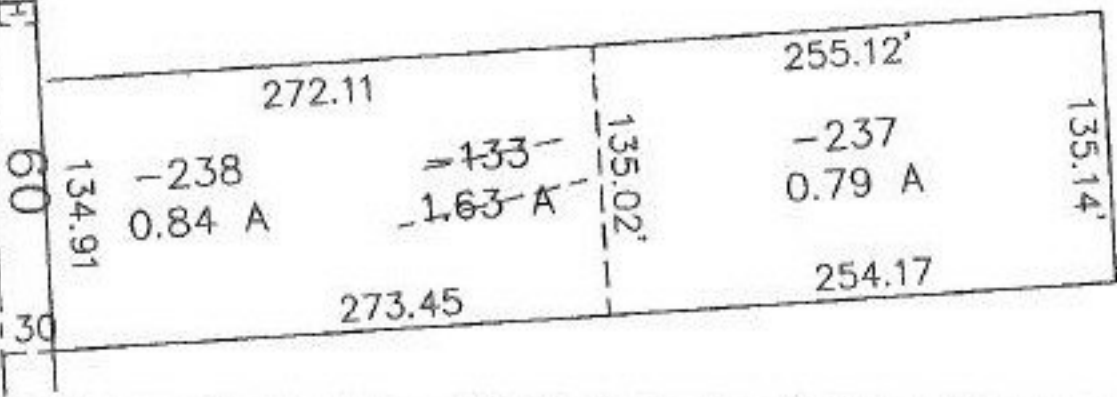
TERNES AVENUE

793.91'

60

30

C/Ls OF TERNES AVENUE & REASER COURT



SPLITS/DEEDS PROCESSED
 LORAIN COUNTY TAX MAP DEPARTMENT
 226 MIDDLE AVE. ELYRIA, OHIO

SURVEYED BY: MARK A YEAGER
 CLOSURE: 0.09 / 10.000
 MAP PAGE(S): 6-126
 APPROVED BY: F. COLBERT DATE: 9/3/98
 SCALE: 1" = 100' PRIOR INSTRUMENT: 1291/301