

PARENT PARCEL: 09-00-086-105-049

CHILD PARCEL: XXXXXXXXXXXX

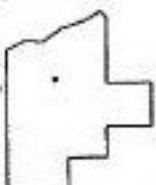
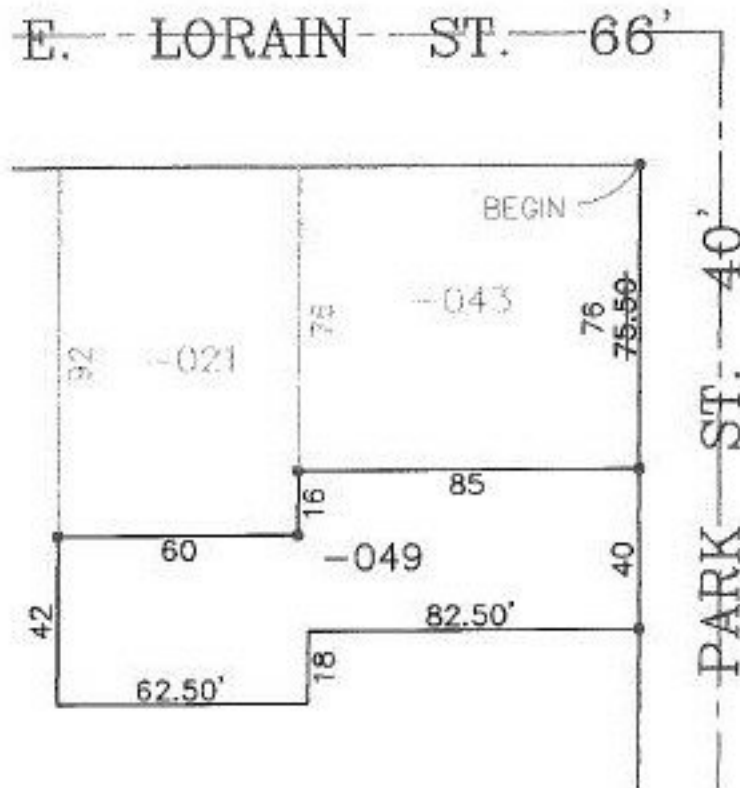
STARTING POINT: WEST ROW OF PARK ST. & SOUTH ROW OF E. LORAIN ST.

NO. 22624-D



# MAP CHANGES ONLY

• I.P. FOUND



**SPLITS/DEEDS PROCESSED**  
**LORAIN COUNTY TAX MAP DEPARTMENT**  
 226 MIDDLE AVE. ELYRIA, OHIO

SURVEYED BY: RODGER G. SIMON  
 CLOSURE: 0.00 : 10.000  
 MAP PAGE(S): 9-00-086-A  
 APPROVED BY: TJS DATE: 09/01/98  
 SCALE: 1" = 50' PRIOR INSTRUMENT: OR 665/202

*JAP* 6/21/99