

N. Line 22

N. Line 21

PT. 06-24-021-000-012
PT. 3.08A.

PT. -012
PT. 3.08A.

PT. 06-24-021-000-013
PT. 6.50A.

PT. -013
PT. 6.50A.

PT. 06-24-021-000-043
PT. 3.18A.

PT. -043
PT. 3.18A.

PT. 06-24-021-000-040
PT. 2.64A.

PT. -040
PT. 2.64A.

06-24-021-000-041
PT. 2.17A.

PT. -041
PT. 2.17A.

-016
1.26A.

PT. -042
PT. 1.74A.

-020
.64A

-046
1.07

-019
1.59A.

-020
1.59A.

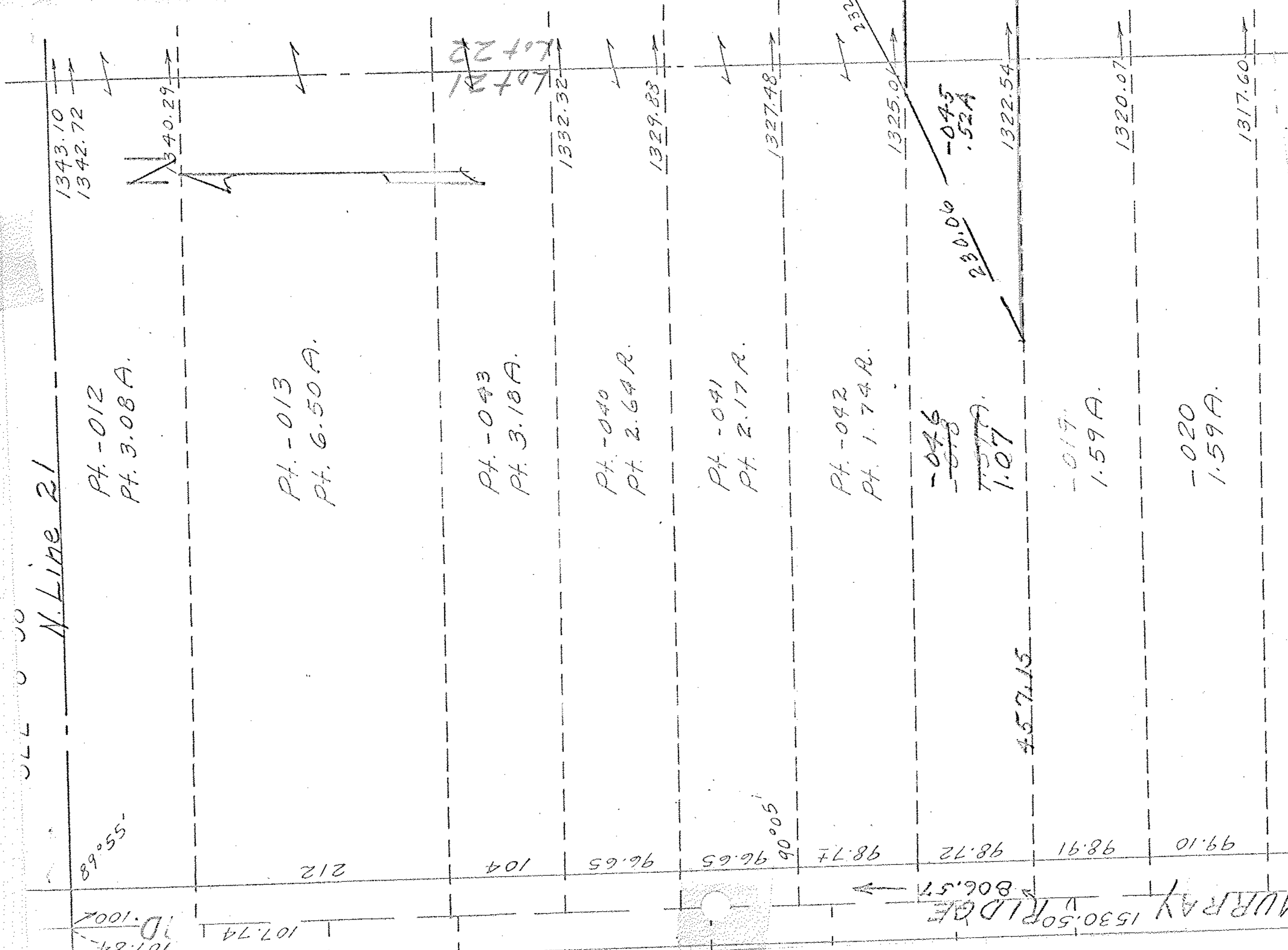
APPROVED
LORAIN CO.
MAP DEPT.
DATE 11/7/68
BY R. J. Keating
R.K.

2262

-002
1.41A.

-003
1.41A.

-004



066 0 00

89°55'

212

104

96.65

96.65

98.77

98.72

98.91

99.10

107.84
D. 1007

107.74

MURRAY 1530.50 RIDGE
806.57

91°22'

104.03
99.90
96.68

96.68
96.68
96.68

452.31

452.31

98.56

582.08

582.08

98.74

457.15

1320.07

1317.60

99.12

97.27