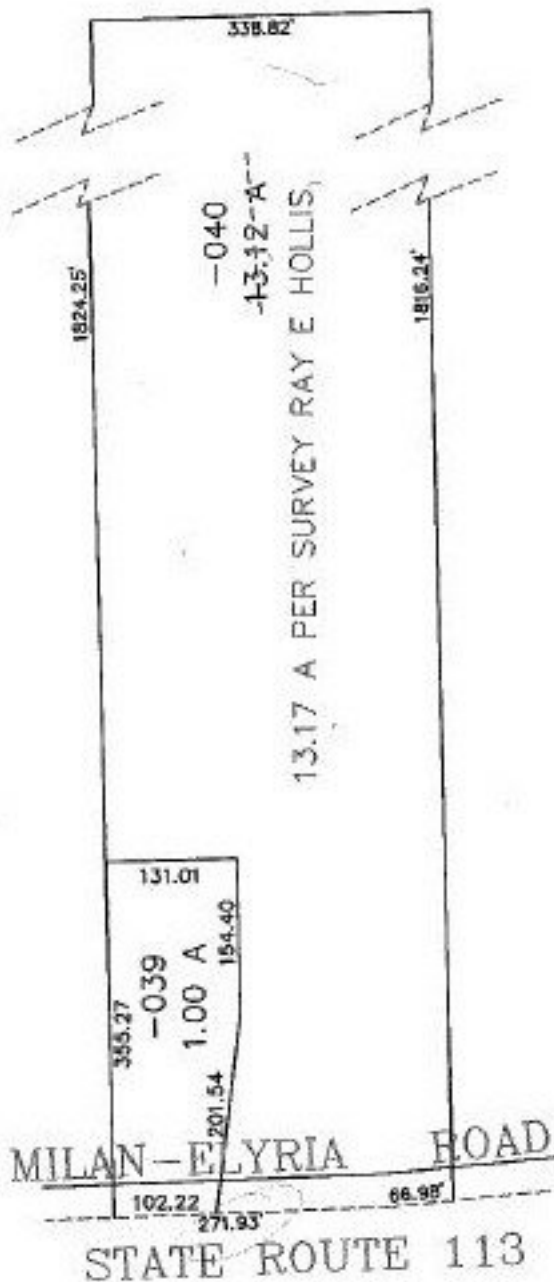


PARENT PARCEL: 05-00-048-000-040

CHILD PARCEL: 05-00-048-000-040

STARTING POINT: C/L ELYRIA-MILAN ROAD & LINE BETWEEN ELMER L BAXTER ON THE EAST AND C.C.NIXON ON THE WEST

NO. 22616-X



**SPLITS/DEEDS PROCESSED**  
 LORAIN COUNTY TAX MAP DEPARTMENT  
 226 MIDDLE AVE. ELYRIA, OHIO

SURVEYED BY: RAY E HOLLIS  
 CLOSURE: 0.51 / 10.000  
 MAP PAGE(S): 5-00-048-B  
 APPROVED BY: E. COLBERT DATE: 9/10/98  
 SCALE: 1" = 200' PRIOR INSTRUMENT: C.T. CASE NUMBER 08700000