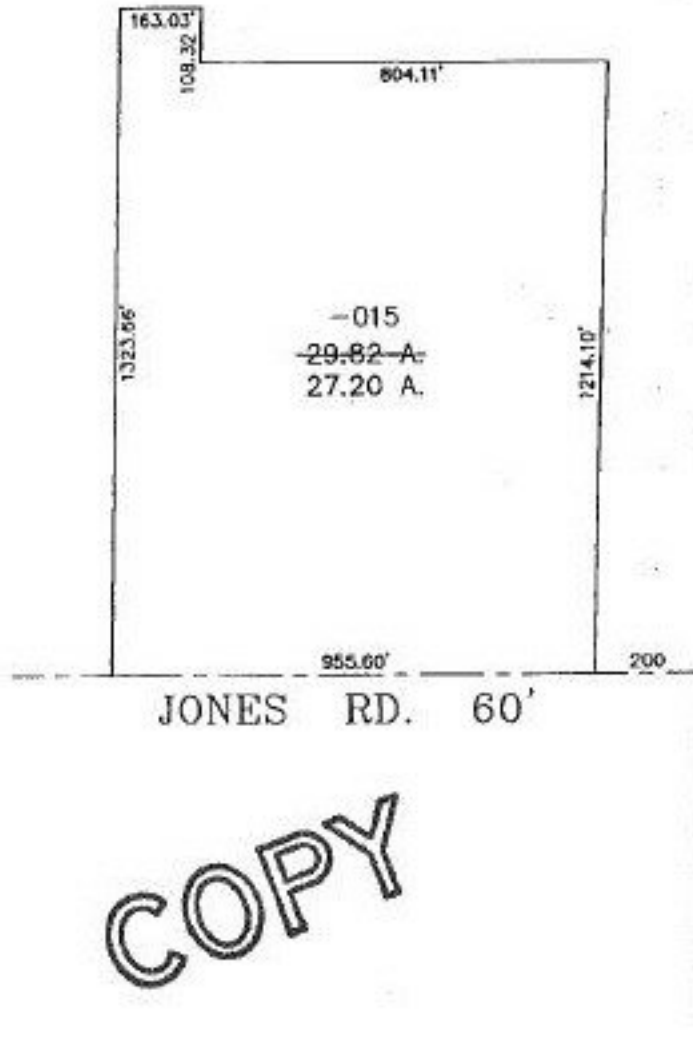


PARENT PARCEL: 19-02-059-000-015

CHILD PARCEL: XX-XX-XXX-XXX-XXX

STARTING POINT: I.P. AT THE EAST LINE OF O.L. 59& CL. OF JONES RD.

NO. 22603-A



ORIGINAL
 WAS CUT
 WHEN I
 CHECKED
 THIS
 ACRE CORR.
 9/10/98

Hot Line 1-800-HHW-LINE
 Printed with soy ink on recycled paper.

COPY

DP 1-4-97



SPLITS/DEEDS PROCESSED

LORAIN COUNTY TAX MAP DEPARTMENT
226 MIDDLE AVE. ELYRIA, OHIO

SURVEYED BY: GUY P. HANEY

CLOSURE: 0.01 : 10,000

MAP PAGE(S): 19-H

APPROVED BY: IJS DATE: 07/28/98

SCALE: 1" = 400' PRIOR INSTRUMENT: OR 1206/490