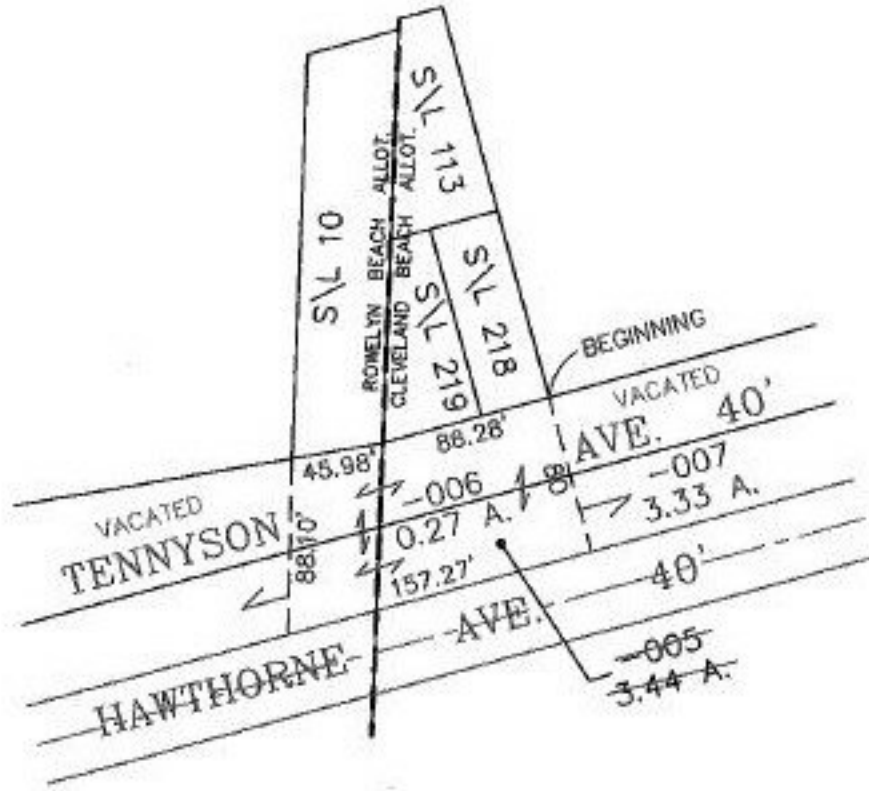


PARENT PARCEL: 03-00-039-108-005 & PT. OF VACATION OF TENNYSON

CHILD PARCEL: 03-00-039-108-006 & -007

STARTING POINT: BEGINNING IN THE NORTH LINE OF TENNYSON AVE. & THE S.E. CORNER OF S\L 218

NO. 22599



4-29-99

SPLITS/DEEDS PROCESSED

LORAIN COUNTY TAX MAP DEPARTMENT
226 MIDDLE AVE. ELYRIA, OHIO

SURVEYED BY: DAVID L. ELWELL

CLOSURE: 0.01 : 10,000

MAP PAGE(S): 03-00-040

APPROVED BY: TJS DATE: 11/17/98

SCALE: 1" = 100' PRIOR INSTRUMENT: DV 923/172