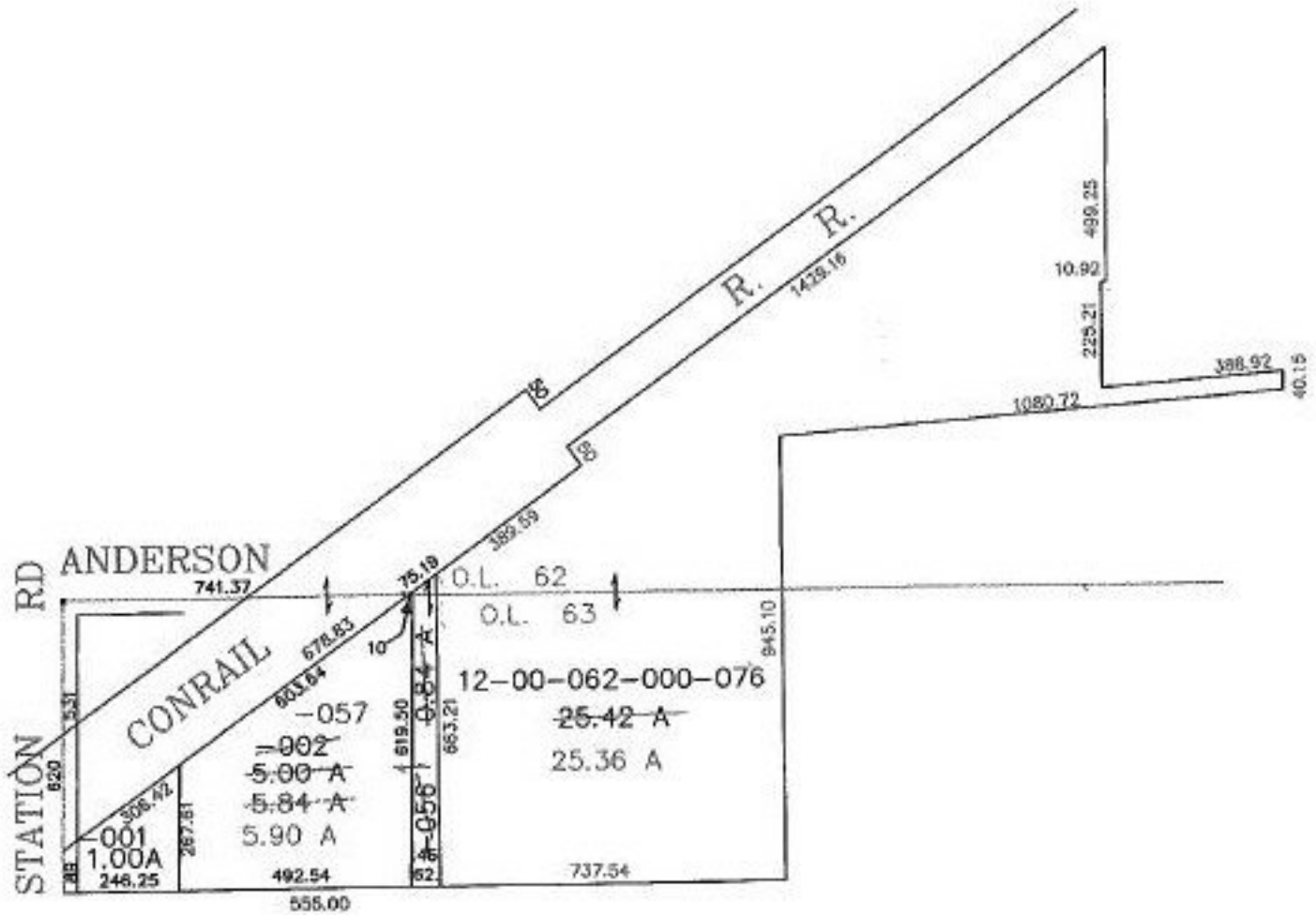


PARENT PARCEL: 12-00-063-102-002, 056, 12-00-062-000-076

CHILD PARCEL: 12-00-063-102-057 & 12-00-062-000-076

STARTING POINT: NW CORNER OF O. L. 63

NO. 22597



SPLITS/DEEDS PROCESSED

LORAIN COUNTY TAX MAP DEPARTMENT
226 MIDDLE AVE. ELYRIA, OHIO

SURVEYED BY: JAMES B. ROOT

CLOSURE: 0.04 PER 10,000

MAP PAGE(S): 12-00-062-A & 12-00-063-A

APPROVED BY: F. COLBERT DATE: 7/6/98

SCALE: 1" = 400' PRIOR INSTRUMENT: 1166/110,117/882