

PARENT PARCEL: 07-00-017-113-059

CHILD PARCEL: ~~XX-XX-XXX-XXX-XXX~~

STARTING POINT: S\ 21 & 22

NO. 22595-D



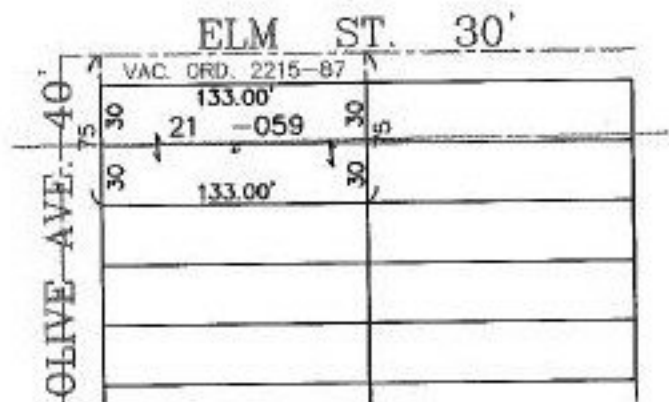
## ACREAGE CORRECTON

07-00-017-113-059

~~60 X 133~~

75 X 133

AC. CORR. PER ORD. 2215-87



**SPLITS/DEEDS PROCESSED**  
LORAIN COUNTY TAX MAP DEPARTMENT  
226 MIDDLE AVE. ELYRIA, OHIO

SURVEYED BY: DEED

CLOSURE: CAN'T RUN

MAP PAGE(S): 07-00-017-B

APPROVED BY: TJS DATE: 07/22/98

SCALE: 1" = 100' PRIOR INSTRUMENT: OR 1283/97