

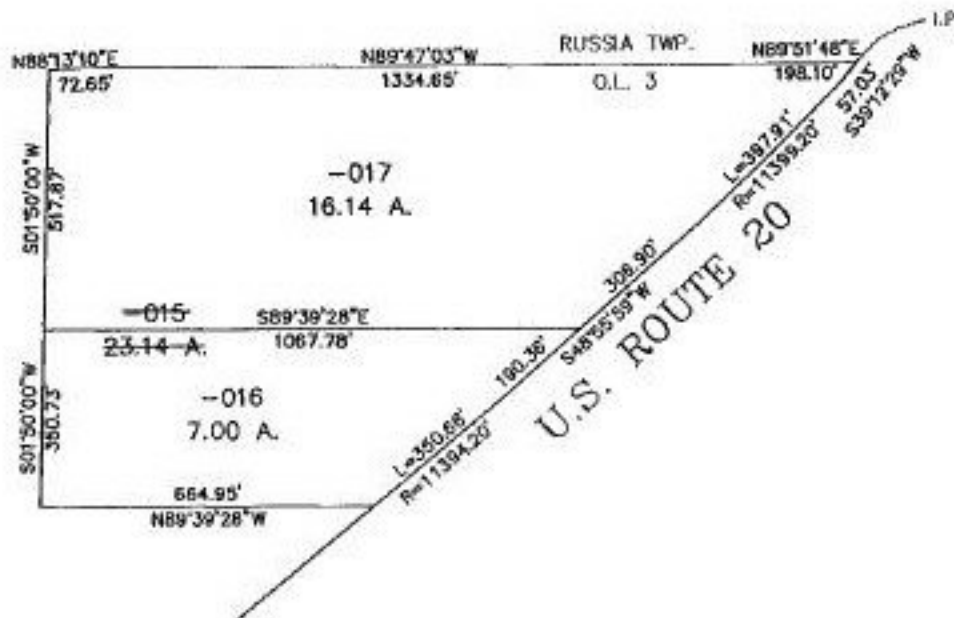
#22590

PARENT PARCEL: 14-00-003-000-015

CHILD PARCEL: 14-00-003-000-016 & 017

STARTING POINT: I.P. AT NORTH LINE OF PITTSFIELD TWP. AND ITS INTERSECTION WITH THE N.W. LINE OF U.S. ROUTE 20

NO. 22590



SPLITS/DEEDS PROCESSED
LORAIN COUNTY TAX MAP DEPARTMENT
226 MIDDLE AVE. ELYRIA, OHIO

SURVEYED BY: RODGER G. SIMON
CLOSURE: 0.02 : 10,000
MAP PAGE(S): 14-C
APPROVED BY: TJS DATE: 07/15/98
SCALE: 1" = 400' PRIOR INSTRUMENT: 970498603