

PARENT PARCEL: 08-13-012-000-002

CHILD PARCEL: XX-XX-XXX-XXX-XXX

STARTING POINT: CL. OF BAUMHART RD., AT NORTHERLY LINE OF

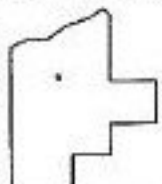
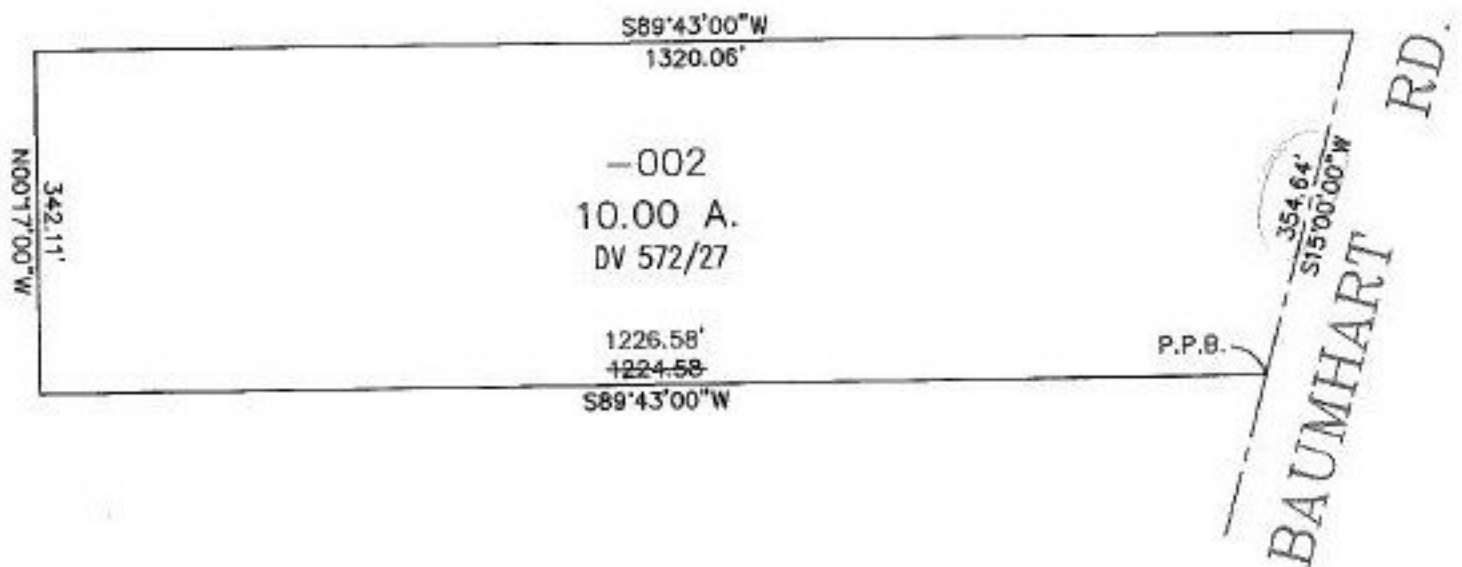
STARTING POINT: CONVEYED LAND TO JESS & BEULAH PORTMAN

NO. 22583-D



MAP CHANGE ONLY

ADD ONE DIMENSION TO
SOUTH LINE OF -002



SPLITS/DEEDS PROCESSED
LORAIN COUNTY TAX MAP DEPARTMENT
226 MIDDLE AVE. ELYRIA, OHIO

SURVEYED BY: I. W. LAUNDON

CLOSURE: 0.04 : 10,000

MAP PAGE(S): 8-H

APPROVED BY: TJS DATE: 07/13/98

SCALE: 1" = 200' PRIOR INSTRUMENT: DV 248/112