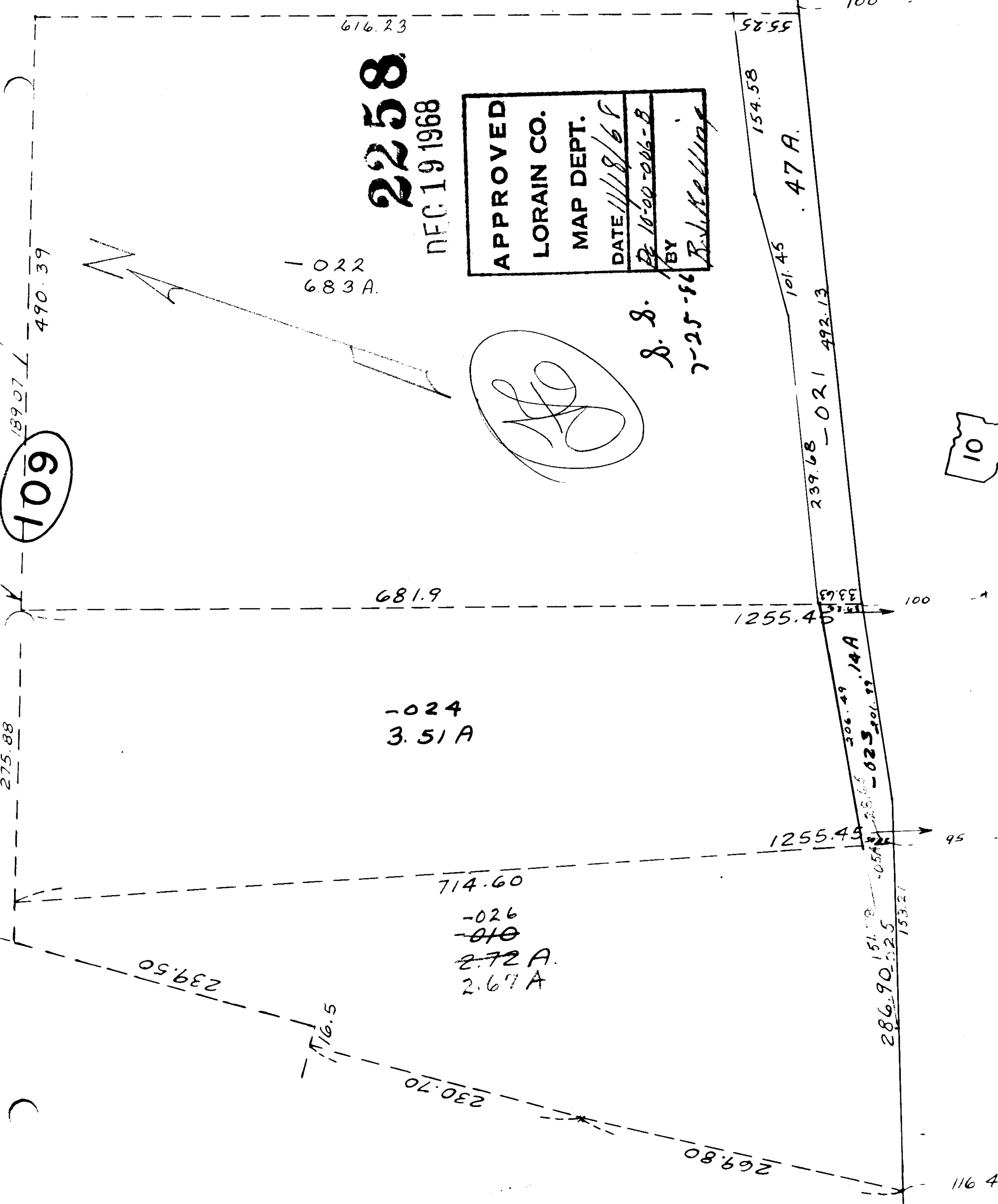


109



2258

DEC 19 1968

APPROVED
 LORAIN CO.
 MAP DEPT.
 DATE 11/18/68
 BY R. J. McMillan

-022
6.83 A.

(Signature)

S. S.
7-25-86

681.9

-024
3.51 A

714.60

-026
~~010~~
2.72 A.
2.67 A

10

116 4