

PARENT PARCEL: 04-00-026-110-011 & 022

CHILD PARCEL: 04-00-026-110-035

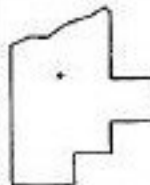
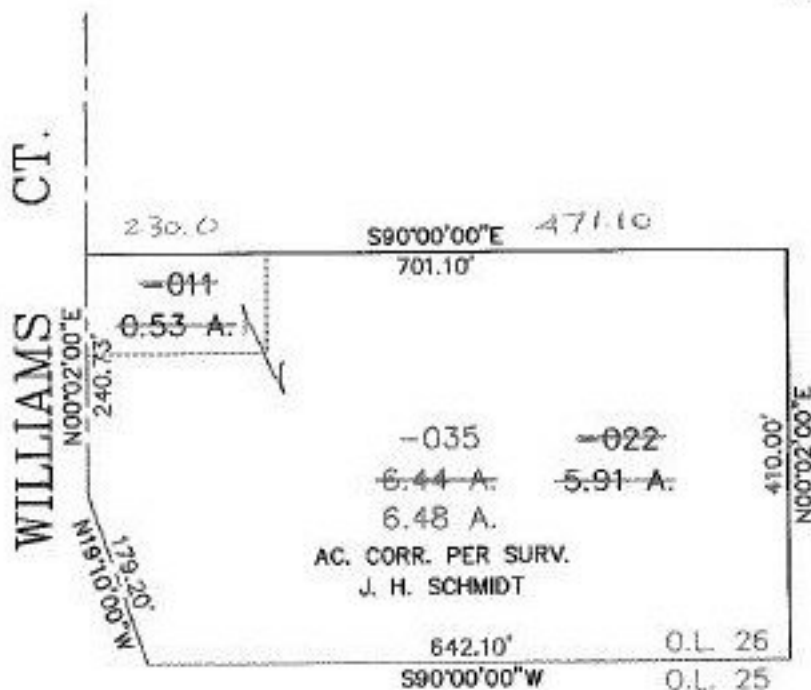
STARTING POINT: CL OF WILLIAMS CT. & IT'S INTERSECTION WITH THE SOUTH LINE OF O.L. 26

NO. 22577



230.00
+ 471.10

701.10



SPLITS/DEEDS PROCESSED

LORAIN COUNTY TAX MAP DEPARTMENT
226 MIDDLE AVE. ELYRIA, OHIO

SURVEYED BY: JAMES H. SCHMIDT

CLOSURE: 0.31 : 10,000

MAP PAGE(S): 4-1

APPROVED BY: TJS DATE: 07/07/98

SCALE: 1" = 200' PRIOR INSTRUMENT: DV 1246/85