

PARENT PARCEL: 06-24-169-000-016 & 002

CHILD PARCEL: 06-24-169-000-019

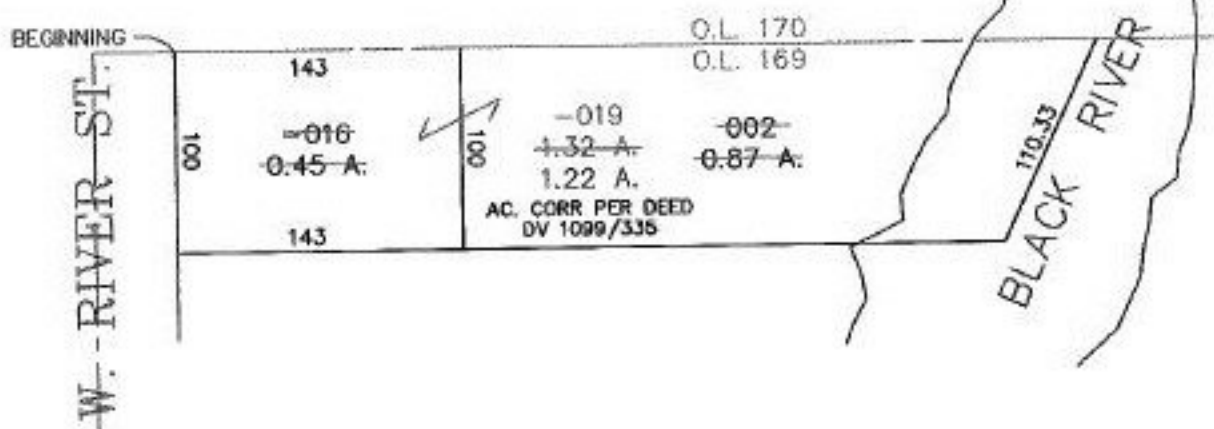
STARTING POINT: EAST R.O.W. OF W. RIVER ST. & IT'S INTERSECTION WITH THE NORTH LINE OF O.L. 169

NO. 22575-D



DEED CHECK

COMBINATION
PER DEED DV 1099/335



SPLITS/DEEDS PROCESSED
LORAIN COUNTY TAX MAP DEPARTMENT
226 MIDDLE AVE. ELYRIA, OHIO

SURVEYED BY: DEED
CLOSURE: CAN'T RUN
MAP PAGE(S): 6-66
APPROVED BY: TJS DATE: 11/11/98
SCALE: 1" = 100' PRIOR INSTRUMENT: DV 1099/355