

PARENT PARCEL: 15-00-005-000-037 & 039

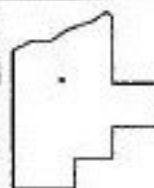
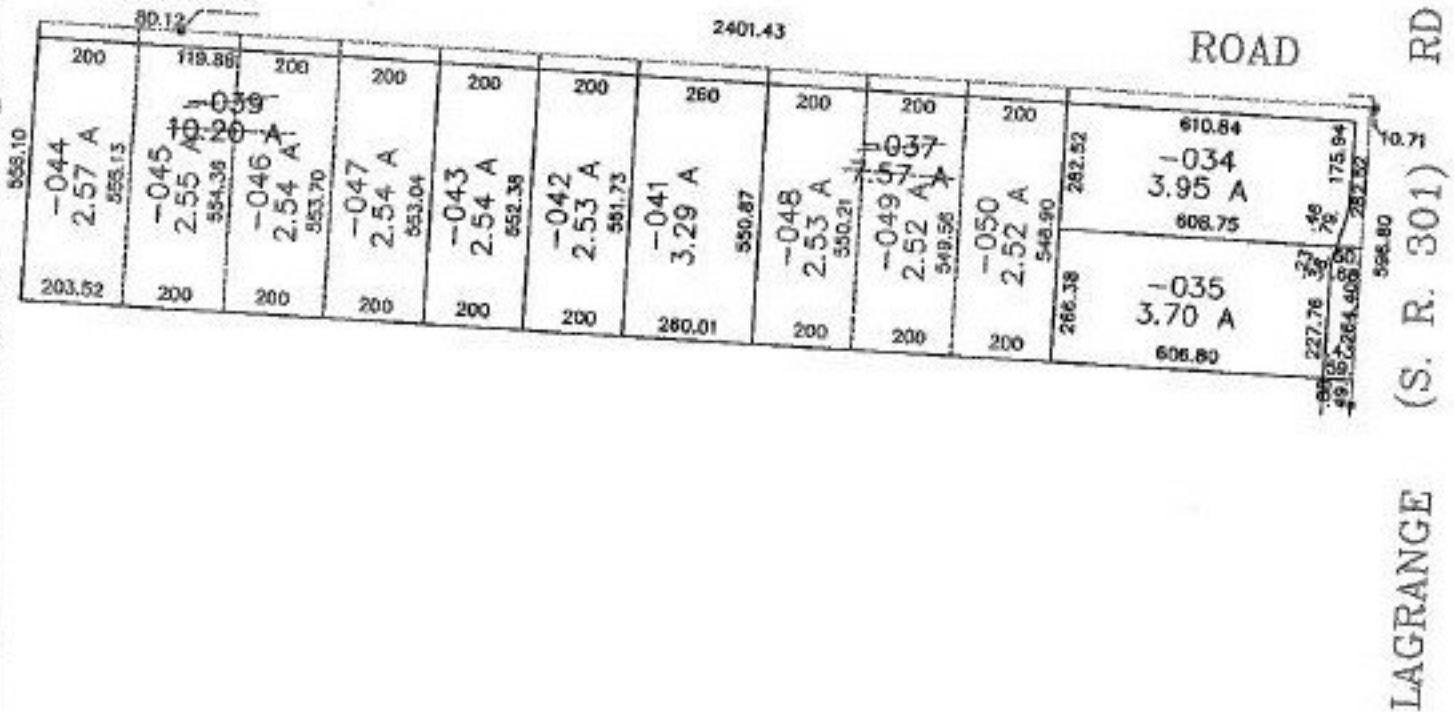
CHILD PARCEL: 15-00-005-000-044 THRU 050

STARTING POINT: NW CORNER OF O. L. 5

NO. 22572



PARSONS



SPLITS/DEEDS PROCESSED
 LORAIN COUNTY TAX MAP DEPARTMENT
 226 MIDDLE AVE. ELYRIA, OHIO

SURVEYED BY: RODGER G SIMON
 CLOSURE: 0.014 PER 10,000
 MAP PAGE(S): 15-00-005-B-15-B
 APPROVED BY: F. COLBERT DATE: 6/30/98
 SCALE: 1" = 400' PRIOR INSTRUMENT: DV XXXX/XXX

4-21-99
m.B.