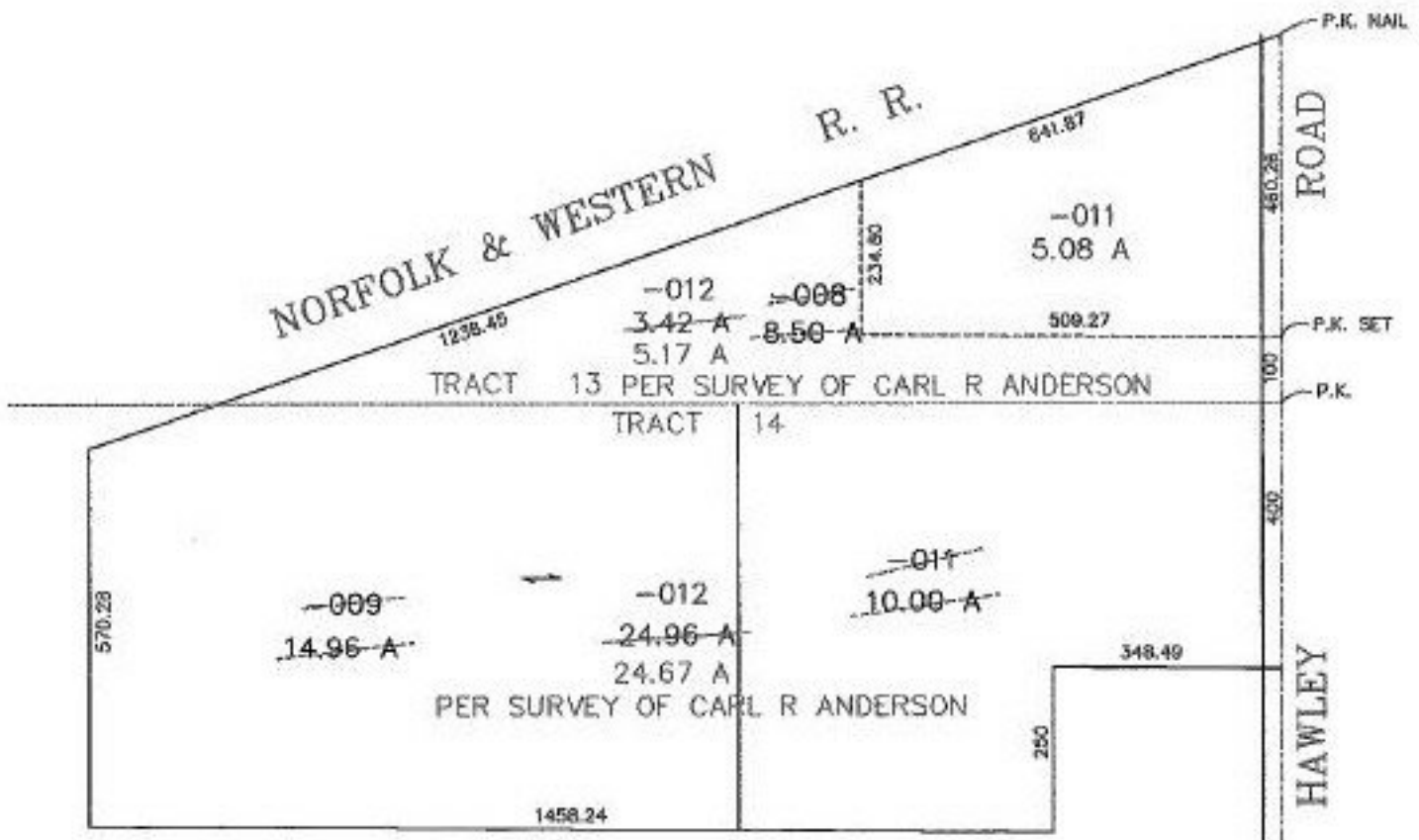


PARENT PARCEL: 21-13-000-000-008, 21-14-000-000-009 & 011

CHILD PARCEL: 21-13-000-000-011 & 012, 21-14-000-000-012

STARTING POINT: C/L OF HAWLEY ROAD & E/W LINE BETWEEN TR.13 & TR.14

NO. 22567



SPLITS/DEEDS PROCESSED
LORAIN COUNTY TAX MAP DEPARTMENT
 226 MIDDLE AVE. ELYRIA, OHIO

SURVEYED BY: CARL R ANDERSON
 CLOSURE: 0.012 PER 10.000
 MAP PAGE(S): 21-G
 APPROVED BY: F. COLBERT DATE: 6/25/98
 SCALE: 1" = 300 PRIOR INSTRUMENT: 1321/486