

PARENT PARCEL: 03-00-108-104-034

CHILD PARCEL: 03-00-108-104-043 THRU 045

STARTING POINT:

NO. 22565-U

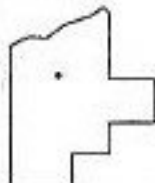
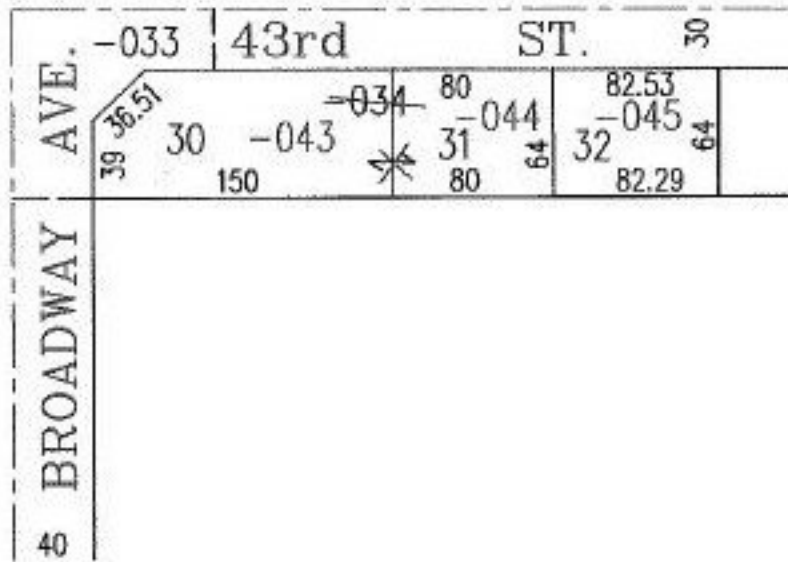
UNCOMBINATION

~~03-00-108-104-034~~
~~75.51 X 190~~

03-00-108-104-043
64 X 150 IRR.

03-00-108-104-044
64 X 80

03-00-108-104-045
82.53 X 64



SPLITS/DEEDS PROCESSED
LORAIN COUNTY TAX MAP DEPARTMENT
226 MIDDLE AVE. ELYRIA, OHIO

SURVEYED BY: DEED
CLOSURE:
MAP PAGE(S): 03-00-108-A
APPROVED BY: IJS DATE: 06/25/98
SCALE: 1" = 100' PRIOR INSTRUMENT: DV 1295/321