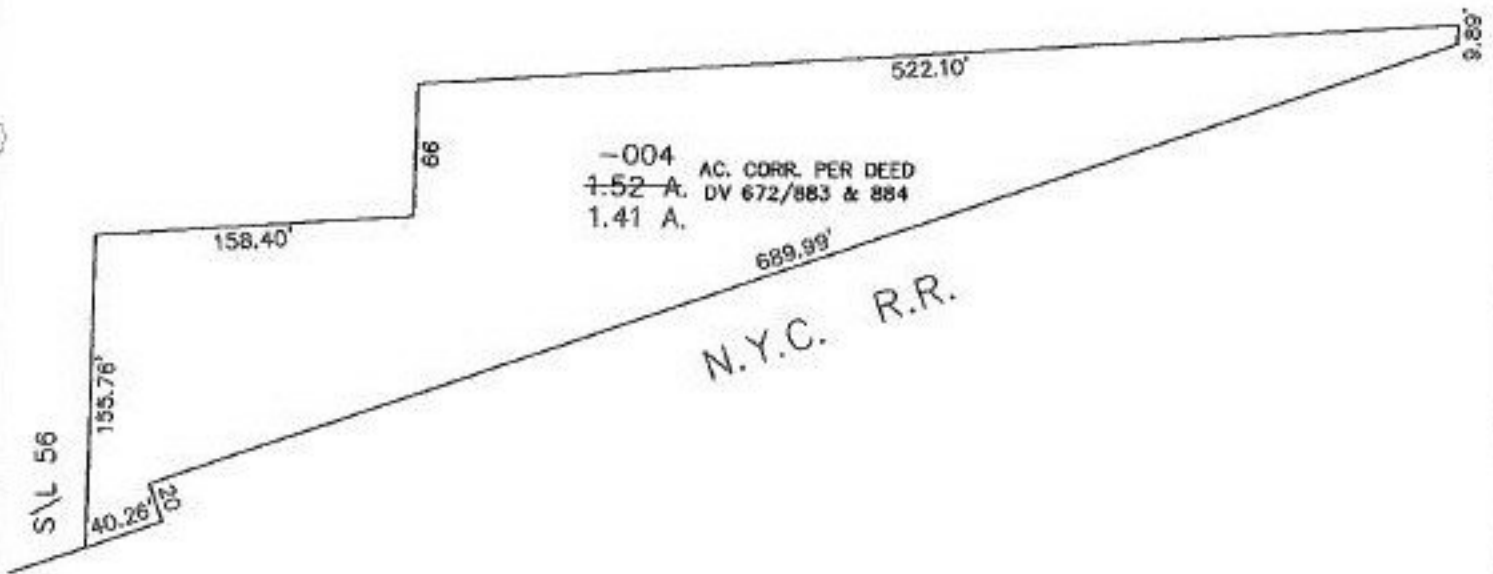


PARENT PARCEL: 13-11-015-500-004

CHILD PARCEL: XX-XX-XXX-XXX-XXX

STARTING POINT: BEGINNING AT THE S.E. CORNER OF S/L 56 IN VILLAGE OF KIPTON, PLAT VI P.10

NO. 22564-D



2 OF 2



SPLITS/DEEDS PROCESSED
LORAIN COUNTY TAX MAP DEPARTMENT
 226 MIDDLE AVE. ELYRIA, OHIO

SURVEYED BY: XXXXXXXXXXXX
 CLOSURE: 0.18 : 10,000
 MAP PAGE(S): 10-A&B, 9-D&H, 13-11-015
 APPROVED BY: TJS DATE: 06/24/98
 SCALE: 1" = 100' PRIOR INSTRUMENT: OR 672/879

TJS 6/21/99