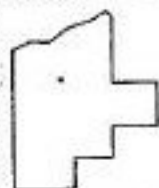
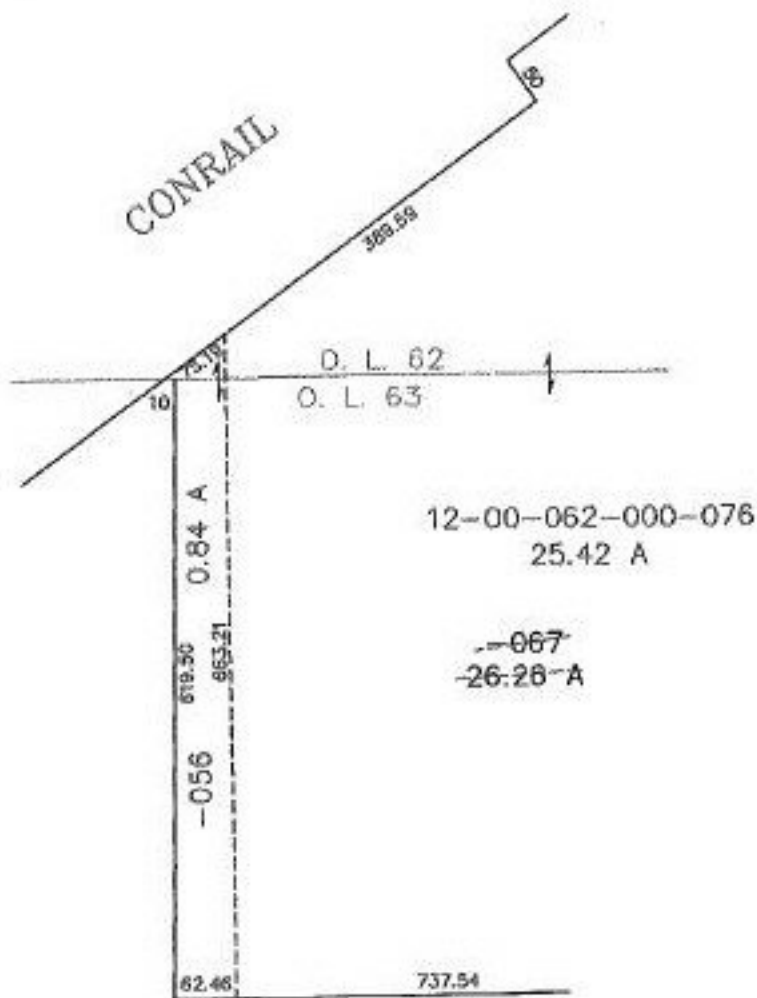


PARENT PARCEL: 12-00-062-000-067

CHILD PARCEL: 12-00-063-102-056 & 12-00-062-000-076

STARTING POINT: N.LINE O.L. 63 & C/L STATION ROAD

NO. 22561



SPLITS/DEEDS PROCESSED

LORAIN COUNTY TAX MAP DEPARTMENT
226 MIDDLE AVE. ELYRIA, OHIO

SURVEYED BY: JAMES B. ROOT
 CLOSURE: 0.02 PER 10,000
 MAP PAGE(S): 12-00-062-A & 063-A
 APPROVED BY: F. COLBERT DATE: 6/24/98
 SCALE: 1" = 200' PRIOR INSTRUMENT: DV 1166/110