

#22558X

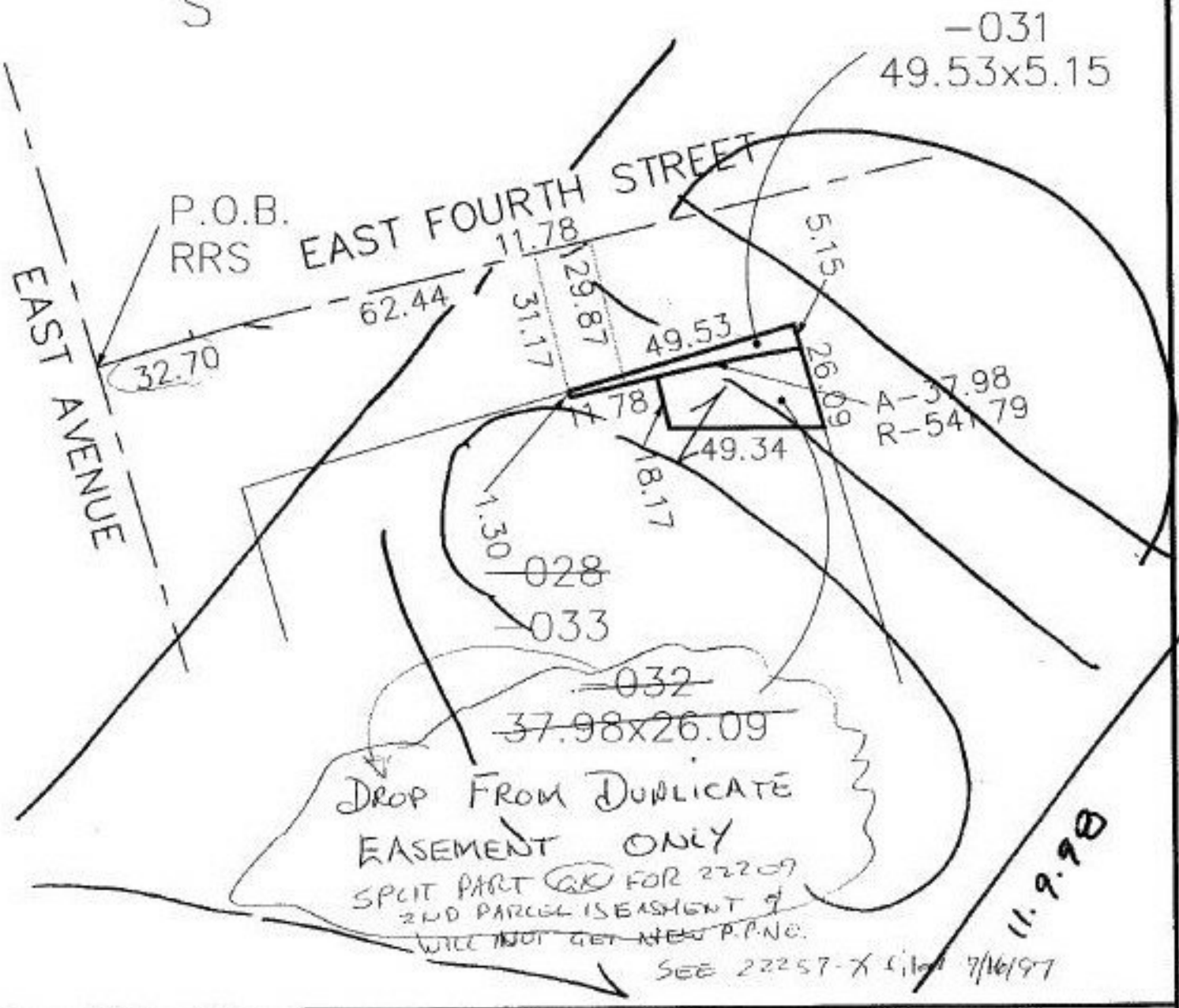
PARENT PARCEL: 06-26-052-000-028
CHILD PARCEL: 06-26-052-000-031, 032, 033
STARTING POINT: INT CL EAST AVENUE & EAST FOURTH STREET

NO. ~~22200~~

22258X



FILED
SEE 22257-X
FOR DROP FROM DUP.
THAT ELIMINATED -032
AS A NEW SPLIT PARCEL



SPLITS/DEEDS PROCESSED
LORAIN COUNTY TAX MAP DEPARTMENT
226 MIDDLE AVE. ELYRIA, OHIO

SURVEYED BY: JAMES E. KARING
CLOSURE: 1.07: 10.000
MAP PAGE(S): 6-120
APPROVED BY: RFB DATE: 06/19/97
SCALE: 1" = 50'