

PARENT PARCEL: 14-00-015-000-014

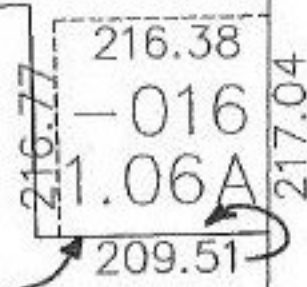
CHILD PARCEL: 14-00-015-000-016

STARTING POINT: SE CORNER OF O.L. 15

NO. 22556



-017
38.71 A ~~-014~~
~~39.77 A~~



58
ROUTE
STATE

490.99

ORIGINAL LOT LINE (NOT C/L OF ROAD)

SE CORNER OF OL 15

4-21-99
m.B.



SPLITS/DEEDS PROCESSED
LORAIN COUNTY TAX MAP DEPARTMENT
226 MIDDLE AVE. ELYRIA, OHIO

SURVEYED BY: RODGER G. SIMON
CLOSURE: 0.04 PER 10,000
MAP PAGE(S): 14-B
APPROVED BY: F. COLBERT DATE: 06/23/98
SCALE: 1" = 200' PRIOR INSTRUMENT: