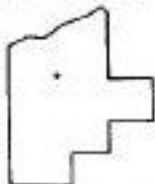
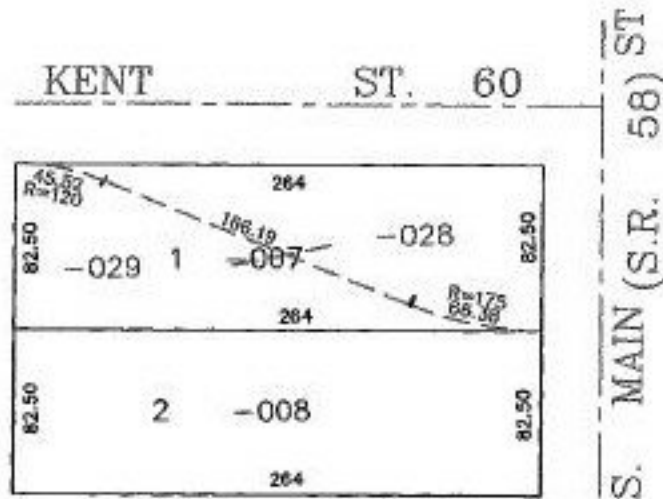


PARENT PARCEL: 18-00-026-105-007

CHILD PARCEL: 18-00-026-105-028 & 029

STARTING POINT: NE CORNER OF S/L 1 IN S.S. WARNER'S SUBDIVISION

NO. 22555



SPLITS/DEEDS PROCESSED
 LORAIN COUNTY TAX MAP DEPARTMENT
 226 MIDDLE AVE. ELYRIA, OHIO

SURVEYED BY: ROBERT A SANFORD
 CLOSURE: 0.02 PER 10,000
 MAP PAGE(S): 18-00-026-B
 APPROVED BY: F. COLBERT DATE: 7/1/98
 SCALE: 1" = 100' PRIOR INSTRUMENT: OR 1398/126

*CK'D
7/1/98*