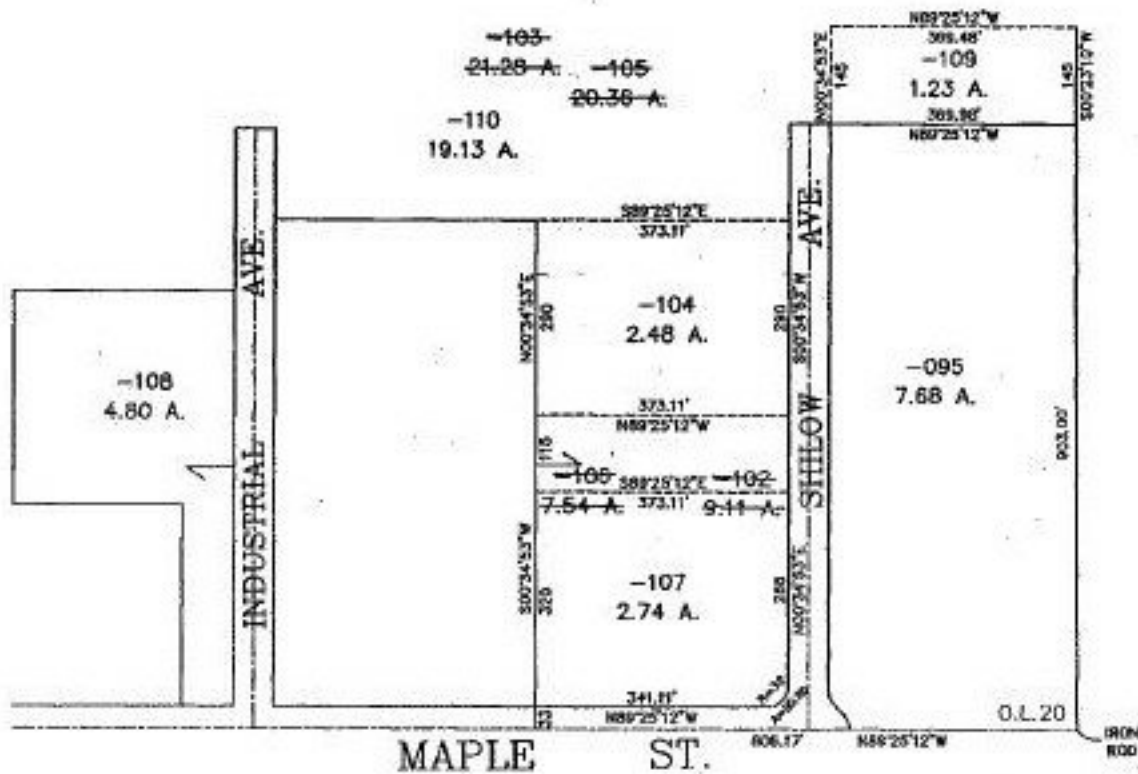


#22546

PARENT PARCEL: 18-00-020-000-102 & 103
CHILD PARCEL: 18-00-020-000-104 THRU 110
STARTING POINT: S.E. CORNER OF O.L. 20, AT AN IRON ROD

NO. 22546



SPLITS/DEEDS PROCESSED
LORAIN COUNTY TAX MAP DEPARTMENT
226 MIDDLE AVE. ELYRIA, OHIO

SURVEYED BY: ROBERT A. SANFORD
CLOSURE: 0.06 : 10,000
MAP PAGE(S): 18-00-020-D
APPROVED BY: TJS DATE: 06/30/98
SCALE: 1" = 300' PRIOR INSTRUMENT: DV 1396/747

BIG LIE