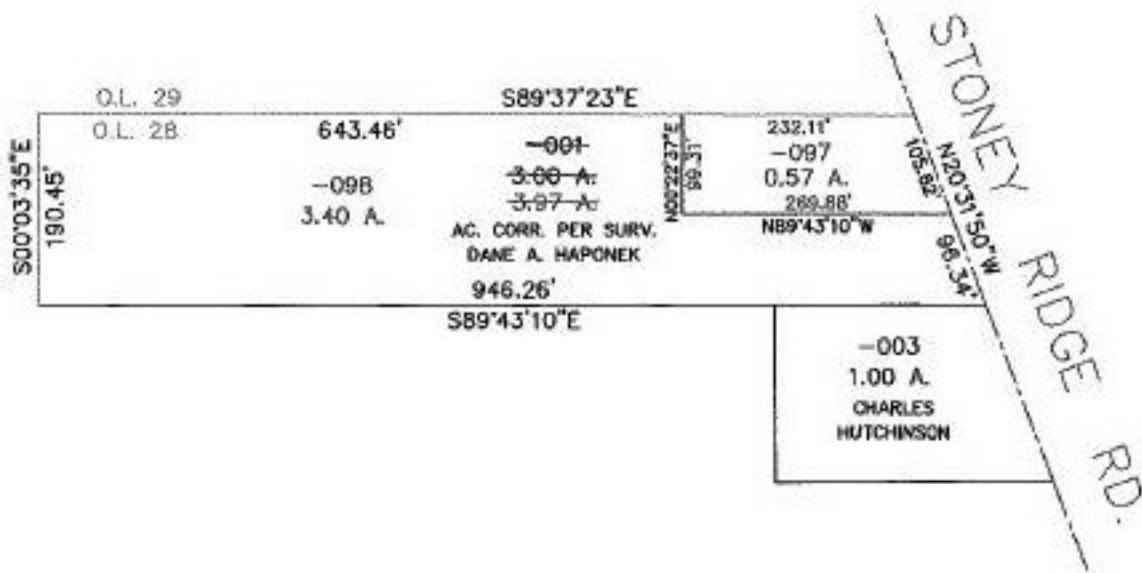


PARENT PARCEL: 07-00-028-101-001

CHILD PARCEL: 07-00-028-101-097 & 098

STARTING POINT: CL. OF STONEY RIDGE RD. & N.E. CORNER OF CHARLES HUTCHINSONS LAND

NO. 22544



SPLITS/DEEDS PROCESSED
 LORAIN COUNTY TAX MAP DEPARTMENT
 226 MIDDLE AVE. ELYRIA, OHIO

SURVEYED BY: DANE A. HAPONEK
 CLOSURE: 0.11 : 10,000
 MAP PAGE(S): 7-00-028-A
 APPROVED BY: TJS DATE: 06/04/98
 SCALE: 1" = 200 PRIOR INSTRUMENT: OR 287/243