

PARENT PARCEL: 06-24-012-101-013

CHILD PARCEL: XX-XX-XXX-XXX-XXX

STARTING POINT: N.W. CORNER OF -013 & S. ROW LINE OF LOWEL ST. - ST. RT 113

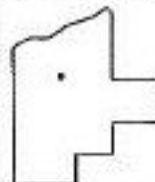
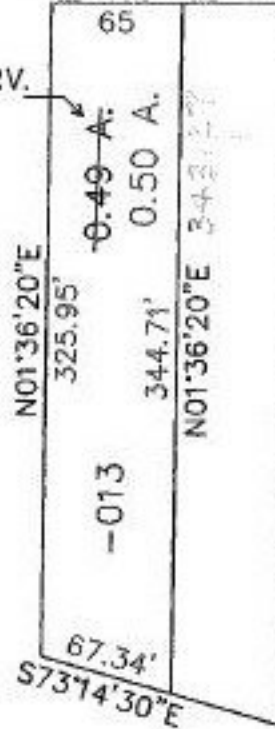
NO. 22542-A



LOWEL ST.

S89°24'30"E

AC. CORR. PER SURV.
RAY E. HOLLIS



SPLITS/DEEDS PROCESSED
LORAIN COUNTY TAX MAP DEPARTMENT
226 MIDDLE AVE. ELYRIA, OHIO

SURVEYED BY: RAY E. HOLLIS
 CLOSURE: 0.15 : 10,000
 MAP PAGE(S): 8-96
 APPROVED BY: TJS DATE: 06/03/98
 SCALE: 1" = 100' PRIOR INSTRUMENT: