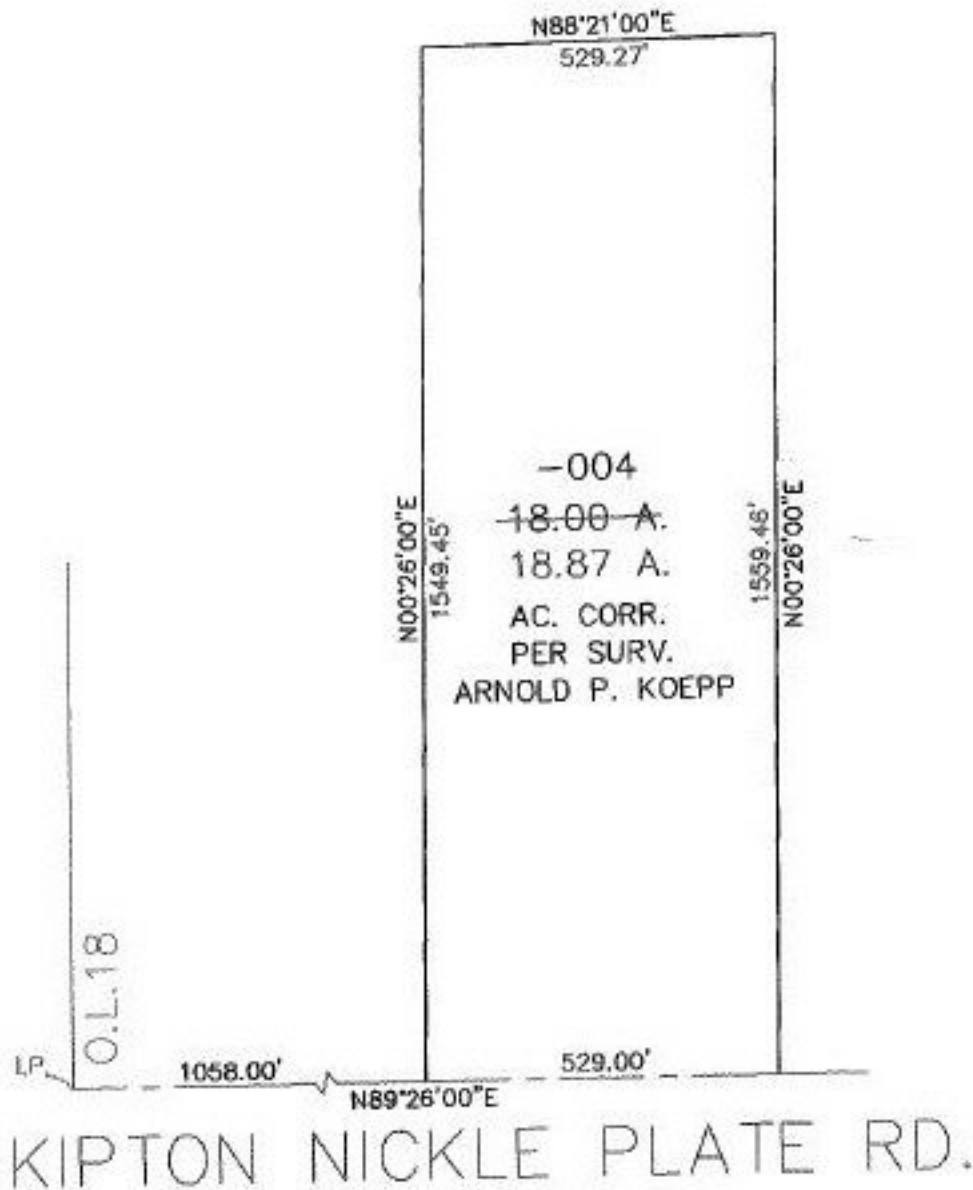


PARENT PARCEL: 14-00-018-000-004

CHILD PARCEL: XX-XX-XXX-XXX-XXX

STARTING POINT: I.P. AT S.W. CORNER OF O.L. 18 & CL. OF KIPTON NICKLE PLATE RD.

NO. 22536-D



*L-21-98  
m.B.*



**SPLITS/DEEDS PROCESSED**  
 LORAIN COUNTY TAX MAP DEPARTMENT  
 226 MIDDLE AVE. ELYRIA, OHIO

SURVEYED BY: ARNOLD P. KOEPP  
 CLOSURE: 0.00 : 10.000  
 MAP PAGE(S): 14-C  
 APPROVED BY: TJS DATE: 06/01/98  
 SCALE: 1" = 300' PRIOR INSTRUMENT: DV 1284/17

7-9-98