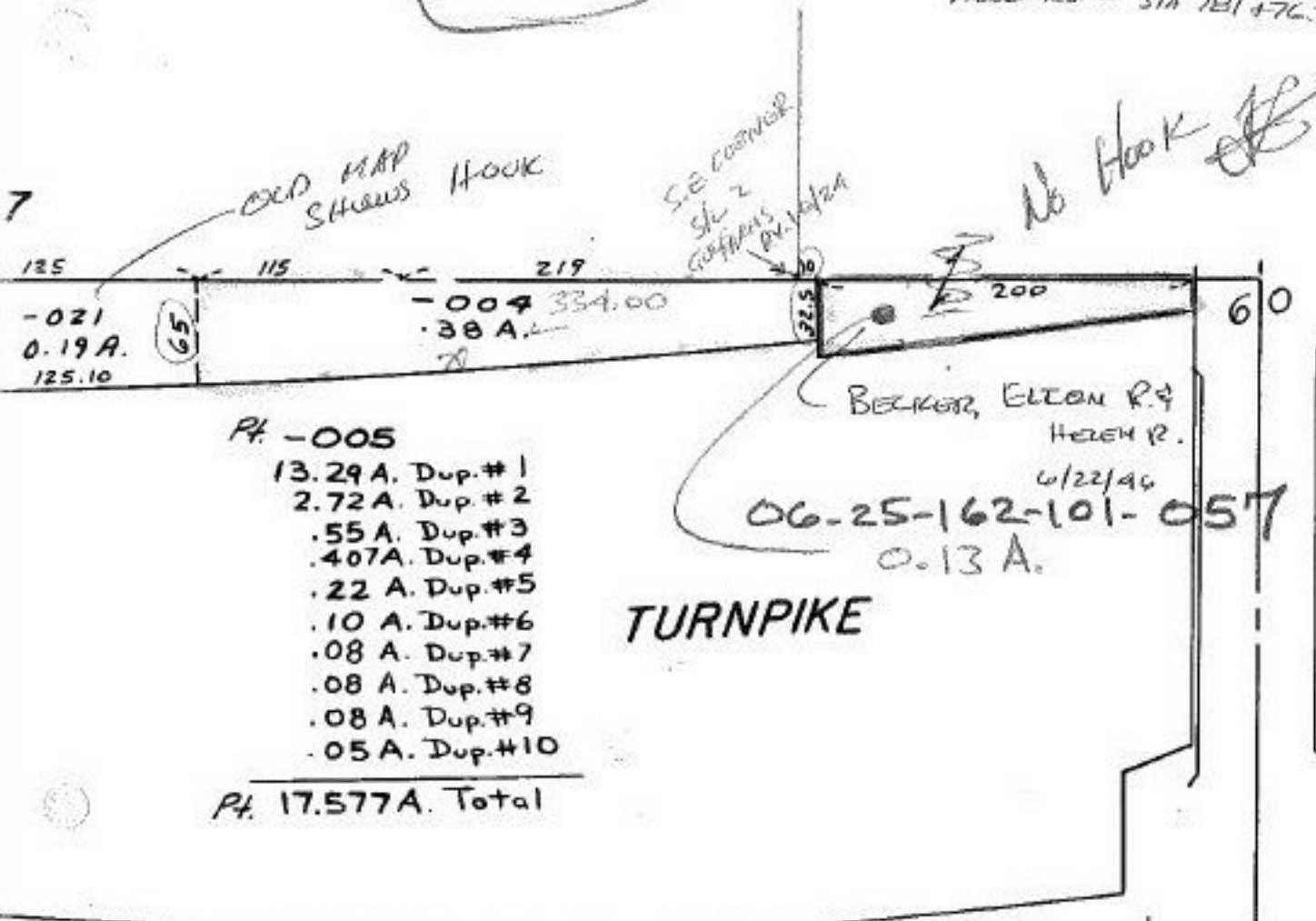


PV 15/41

ELYRIA
BK 3
Pg. 23

OLD TIME PAGE
ABBE RD = STA 781 + 76.27

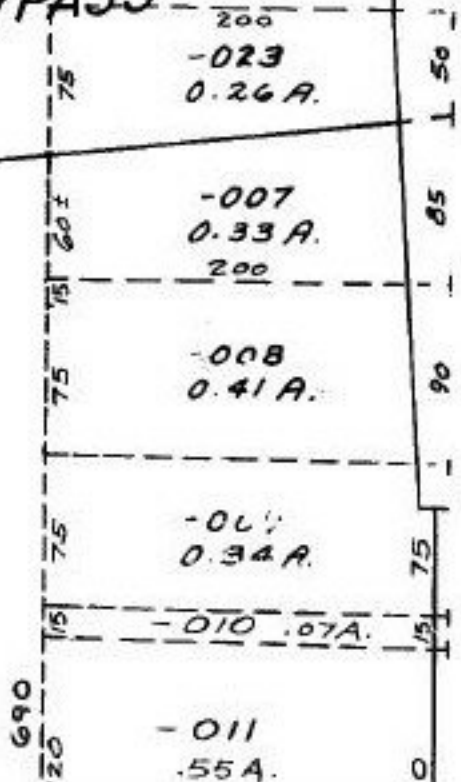
162



- Pt. -005
- 13.29 A. Dup. #1
 - 2.72 A. Dup. #2
 - .55 A. Dup. #3
 - .407 A. Dup. #4
 - .22 A. Dup. #5
 - .10 A. Dup. #6
 - .08 A. Dup. #7
 - .08 A. Dup. #8
 - .08 A. Dup. #9
 - .05 A. Dup. #10
- Pt. 17.577 A. Total

161

BYPASS



RD.

#22531-R

APPROVED
LORAIN CO.
MAP DEPT.

DATE 5-28-98

PAGE 6-85

BY T.M.A. inc

FILE NUMBER 22531-R

6-85