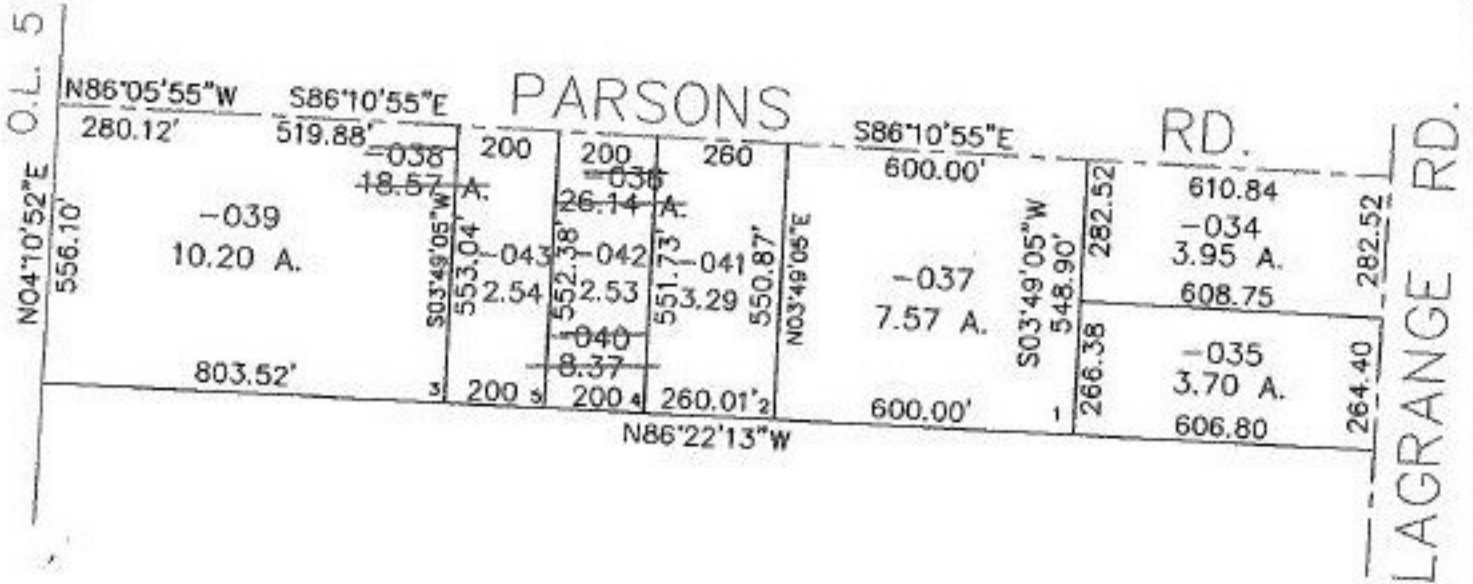


PARENT PARCEL: 15-00-005-000-036

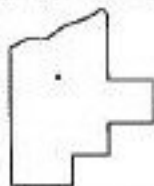
CHILD PARCEL: 15-00-005-000-037 THRU -043

STARTING POINT: CL. OF PARSONS RD. & NW. CORNER OF O.L. 5

NO. 22530



*u. 21. 98
m. 10. 98*



SPLITS/DEEDS PROCESSED
LORAIN COUNTY TAX MAP DEPARTMENT
226 MIDDLE AVE. ELYRIA, OHIO

SURVEYED BY: RODGER G. SIMON
CLOSURE: 0.006 : 10,000
MAP PAGE(S): 15-B
APPROVED BY: IJS DATE: 05/13/98
SCALE: 1" = 400' PRIOR INSTRUMENT: 980512006