

PARENT PARCEL: 03-00-112-102-015

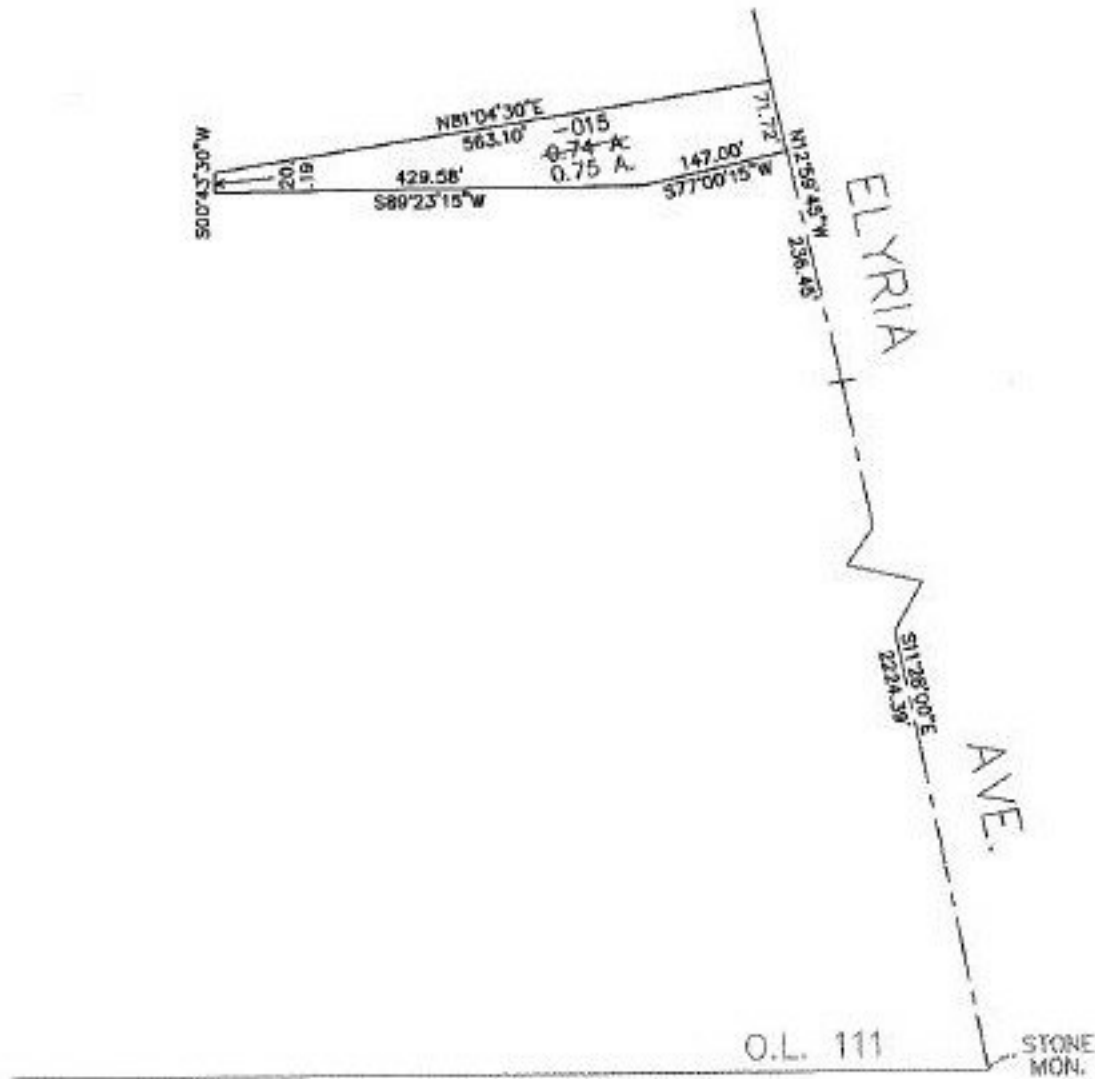
CHILD PARCEL:

STARTING POINT: STONE MON. AR SOUTH LINE OF O.L. 111 & CL. OF ELYRIA AVE.

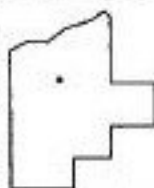
NO. 22529-X



# ACREAGE CORRECTION



TS  
4-30-99



**SPLITS/DEEDS PROCESSED**  
 LORAIN COUNTY TAX MAP DEPARTMENT  
 226 MIDDLE AVE. ELYRIA, OHIO

SURVEYED BY: DEED  
 CLOSURE: 1.02 : 10.00  
 MAP PAGE(S): 03-00-112-B  
 APPROVED BY: TJS DATE: 05/27/98  
 SCALE: 1" = 200' PRIOR INSTRUMENT: DV 233/295