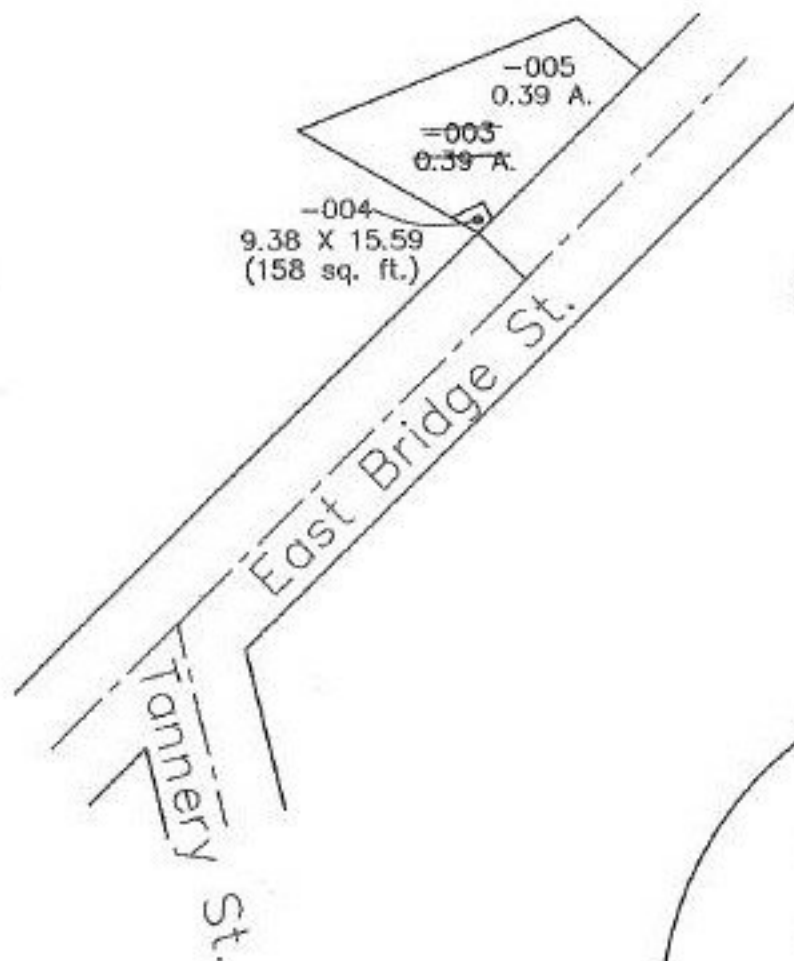


PARENT PARCEL: 06-25-059-000-003

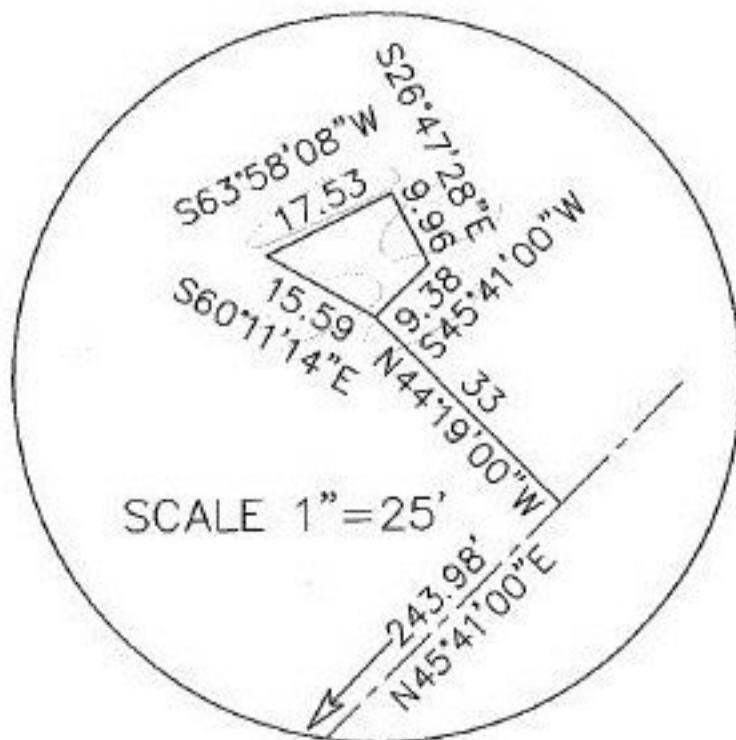
CHILD PARCEL: 06-25-059-000-004, 005

STARTING POINT: c.l. of Tannery St. & c.l. of East Bridge St.

NO. 22526



-003
-115 X -125-
0.39 A.
corr. per deeds
DV 1260/294 & 296
& OR 63/127



SCALE 1"=25'



SPLITS/DEEDS PROCESSED
LORAIN COUNTY TAX MAP DEPARTMENT
226 MIDDLE AVE. ELYRIA, OHIO

SURVEYED BY: James E. Kenyon
CLOSURE: 0.58:10.000
MAP PAGE(S): 6-103
APPROVED BY: kac DATE: 5/6/98
SCALE: 1"= 100 PRIOR INSTRUMENT: OR 63/127