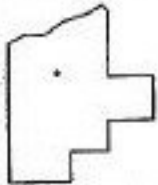
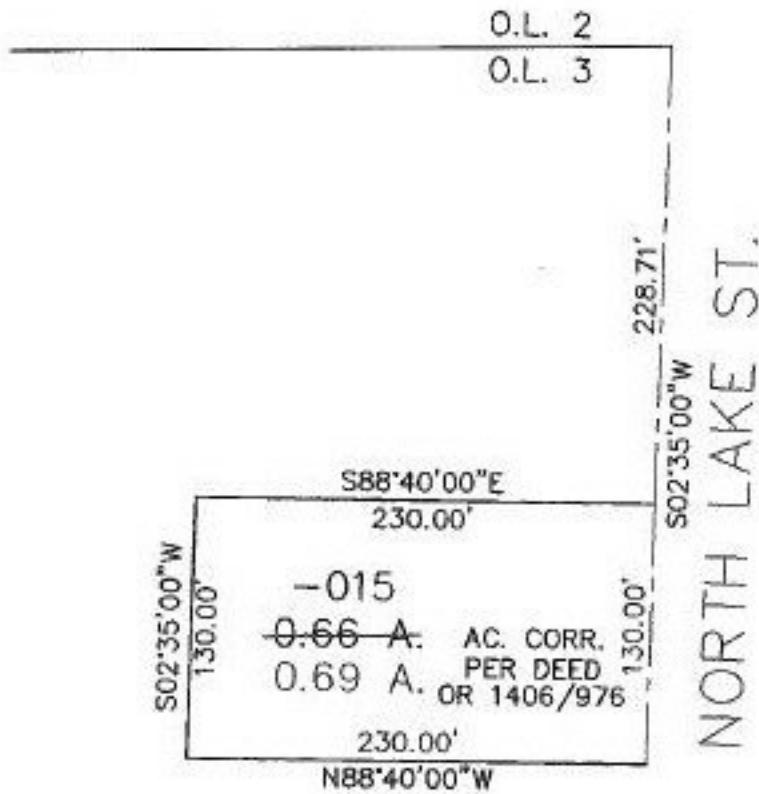


PARENT PARCEL: 05-00-003-102-015

CHILD PARCEL: XX-XX-XXX-XXX-XXX

STARTING POINT: NE CORNER OF ORIG. LOT NO. 3

NO. 22522-D



**SPLITS/DEEDS PROCESSED**  
**LORAIN COUNTY TAX MAP DEPARTMENT**  
 226 MIDDLE AVE. ELYRIA, OHIO

SCALE: 1" = 100'

CLOSURE: 0.00 : 10.000

MAP PAGE(S): 05-00-003-B

APPROVED BY: IJS DATE: 05/18/98

PRIOR INSTRUMENT: DV 1421/744, OR 1406/976