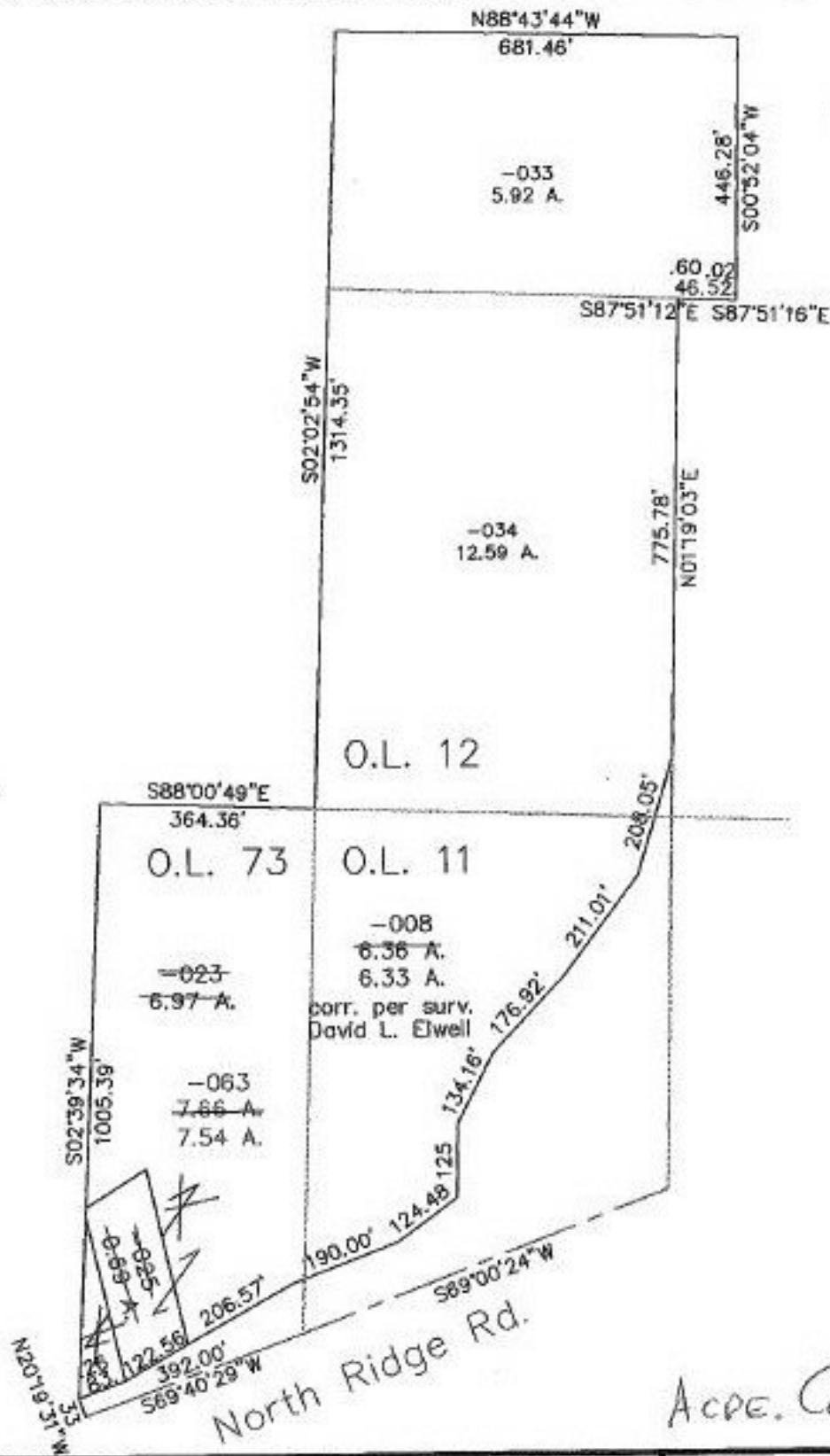


PARENT PARCEL: 03-00-011-101-008, 03-00-073-000-023, 025

CHILD PARCEL: 03-00-011-101-008, 03-00-073-000-063

STARTING POINT: c. of North Ridge Rd. & the line between O.L. 11 and O.L. 73

NO. 22513-D



ACCE. CORR. & COMBINATION

SURVEYED BY: David L. Elwell

CLOSURE: 0.03:10.000

MAP PAGE(S): 3-00-011-A, 3-00-073-B

APPROVED BY: tam. DRAWN BY: kac. DATE: 4/13/98

SCALE: 1" = 300' PRIOR INSTRUMENT: DV 1206/668

SPLITS/DEEDS PROCESSED

LORAIN COUNTY TAX MAP DEPARTMENT  
226 MIDDLE AVE. ELYRIA, OHIO