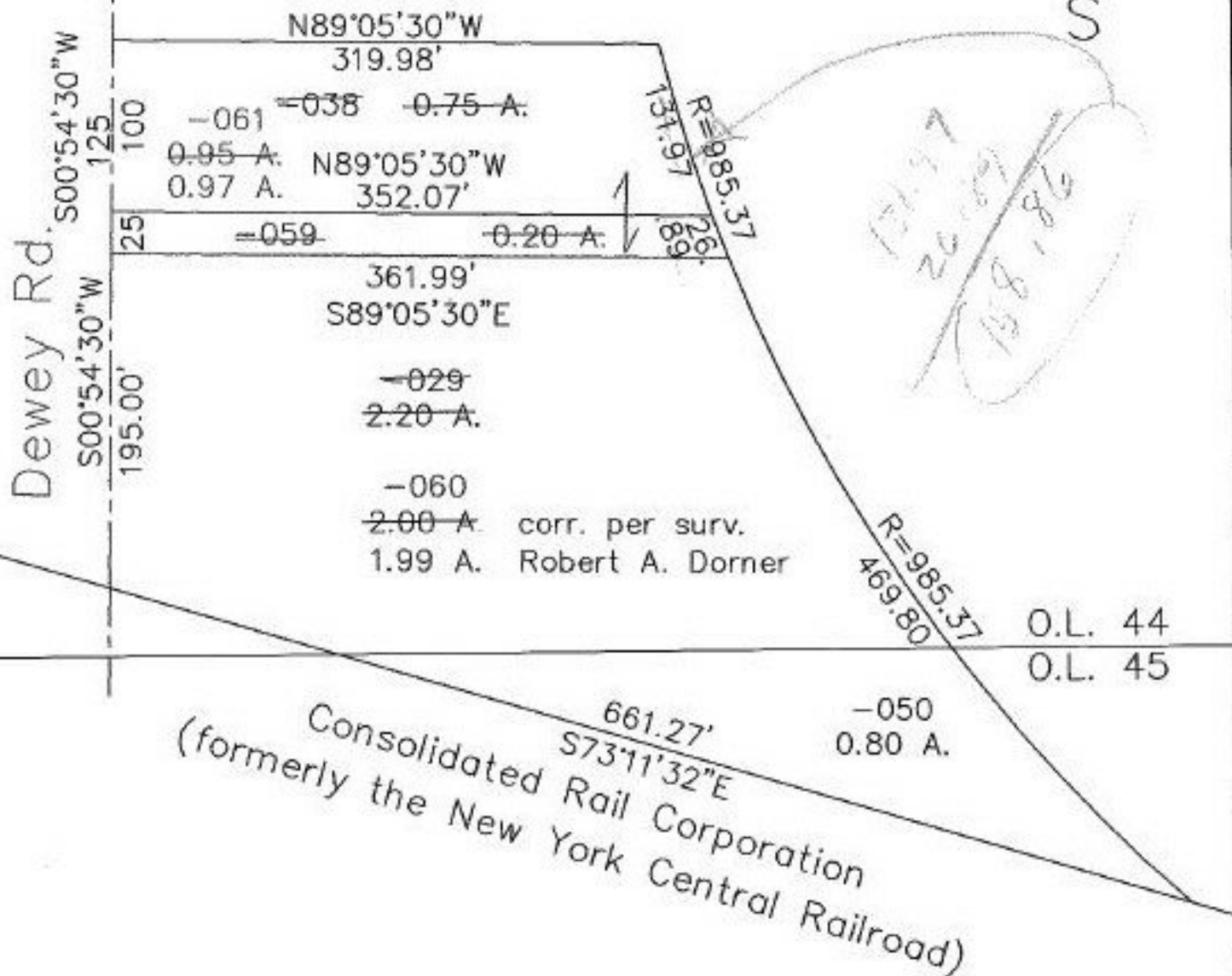


PARENT PARCEL: 05-00-044-000-029, 038

CHILD PARCEL: 05-00-044-000-059, 060, 061

STARTING POINT: c.l. of Dewey Rd. & N. Line of Consolidated Rail Corporation

NO. 22511



**SPLITS/DEEDS PROCESSED**  
 LORAIN COUNTY TAX MAP DEPARTMENT  
 226 MIDDLE AVE. ELYRIA, OHIO

SURVEYED BY: Robert A. Dorner  
 CLOSURE: 0.12:10.000  
 MAP PAGE(S): 05-00-044-B<sup>1-15</sup> SCALE: 1" = 100'  
 APPROVED BY: kac DATE: 4/23/98  
 PRIOR INSTRUMENT: OR 305/535 #970507371