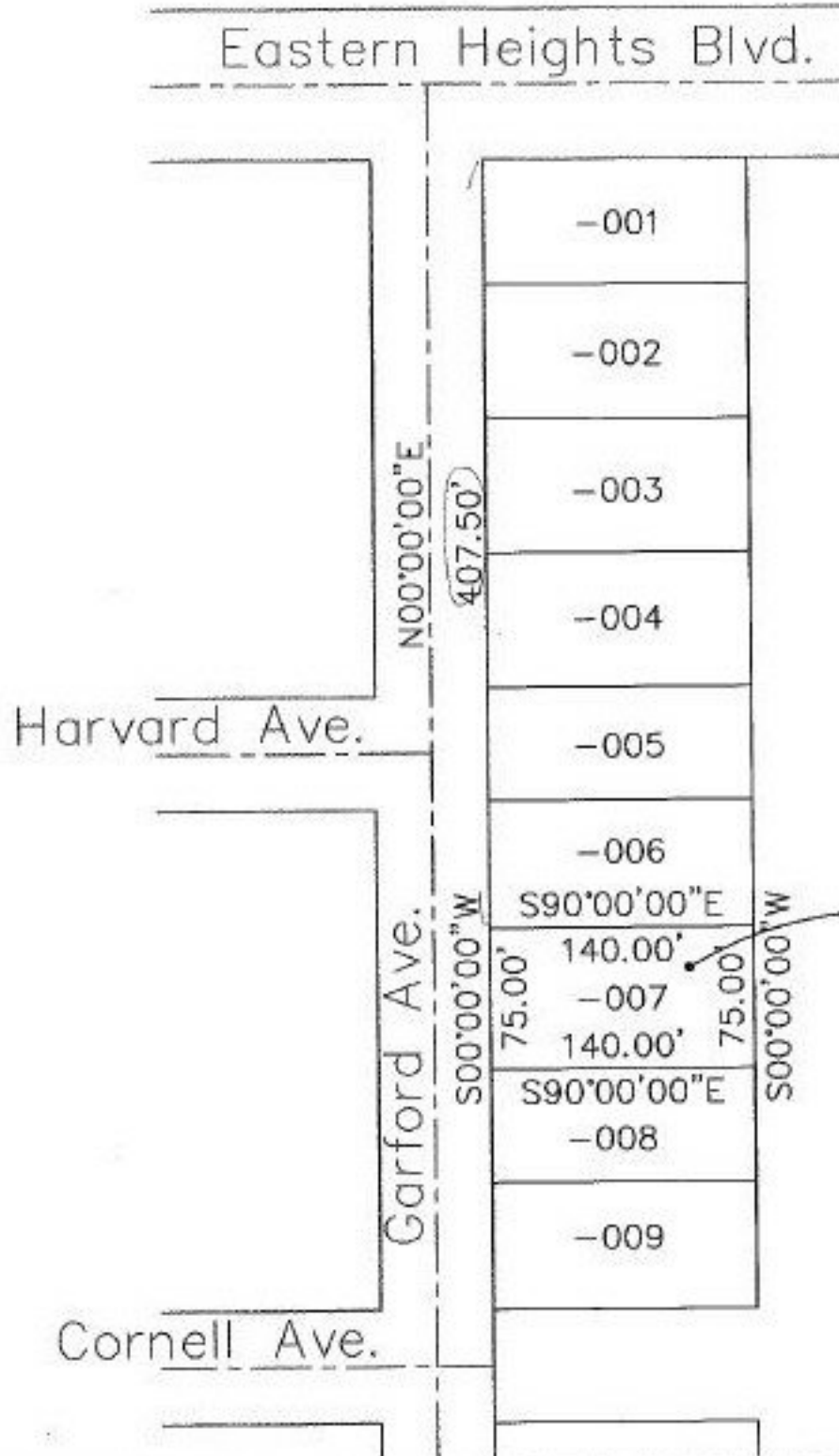


PARENT PARCEL: 06-25-005-113-007

CHILD PARCEL:

STARTING POINT: E. line of Garford Ave. & S. line of Easter Heights Blvd.

NO. 22502-A



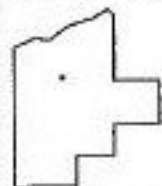
Acreage correction
 Correct tax map
 Correct duplicate
 Register is okay

-007
~~0.23 A. Dup.~~
~~0.24 A. Pl.~~
 0.24 A.

Corr. per surv.
 Laundon, Simon,
 Cahl & Assoc.

SEE DOC. NO.
 980 528690

FILED 4/19/98



SPLITS/DEEDS PROCESSED
 LORAIN COUNTY TAX MAP DEPARTMENT
 226 MIDDLE AVE. ELYRIA, OHIO

SURVEYED BY: Laundon, Simon, Cahl & Assoc.
 CLOSURE: 0.00:10.000
 MAP PAGE(S): 6-122
 APPROVED BY: kac DATE: 4/21/98
 SCALE: 1" = 100' PRIOR INSTRUMENT: #970471183