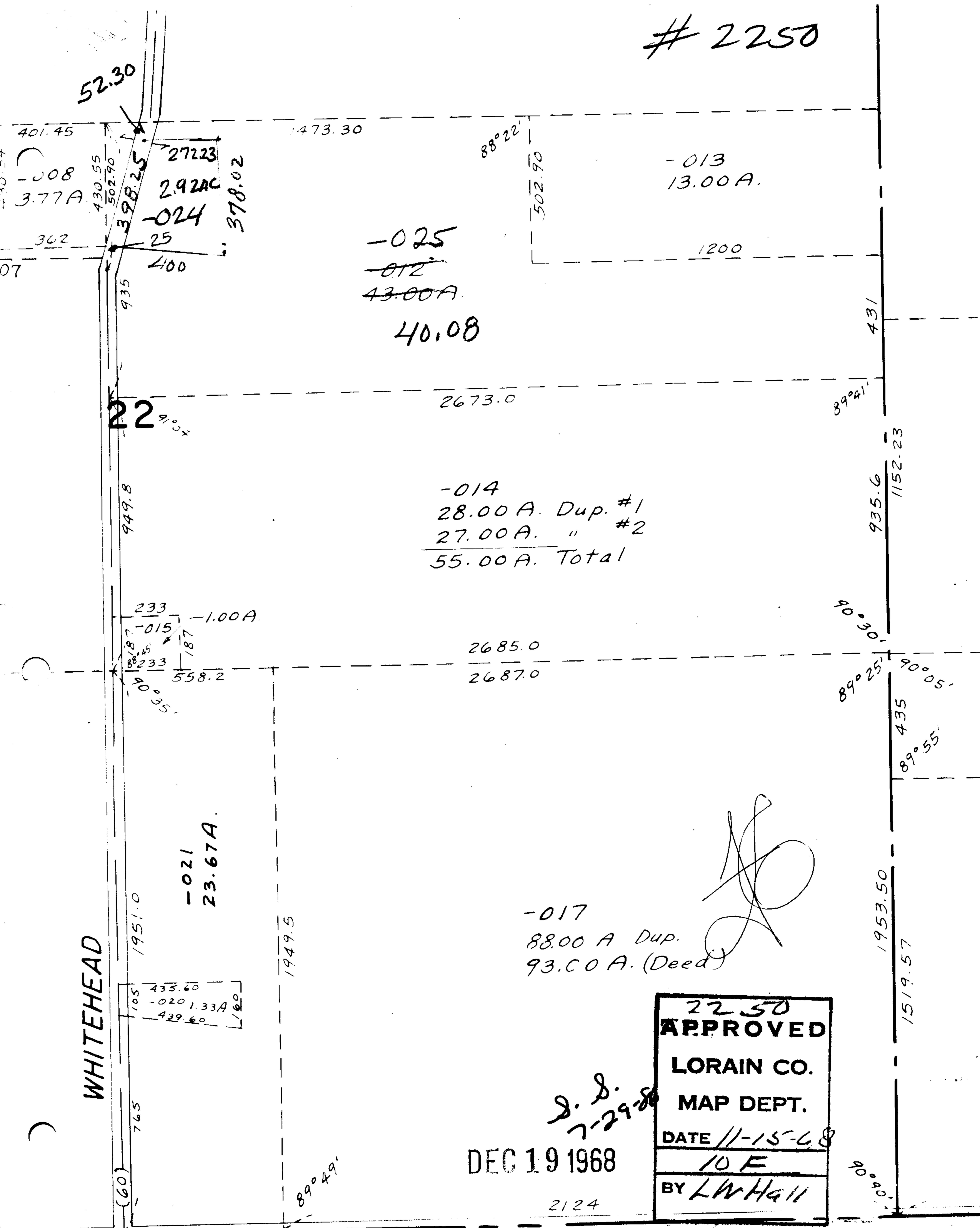


2250



-008
3.77A

272.23
2.92AC
-024
25
400
378.02

-025
~~-012~~
43.00A

40.08

-013
13.00A

22

-014
28.00 A. Dup. #1
27.00 A. " #2
55.00 A. Total

233
-015
1.00A

-021
23.67A

435.60
-020 1.33A
439.60

-017
88.00 A Dup.
93.00 A. (Deed)

WHITEHEAD

DEC 19 1968

S. S.
7-29-68

2124

2250
APPROVED
LORAIN CO.
MAP DEPT.
DATE 11-15-68
10 F
BY LWHall