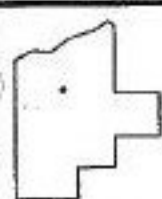
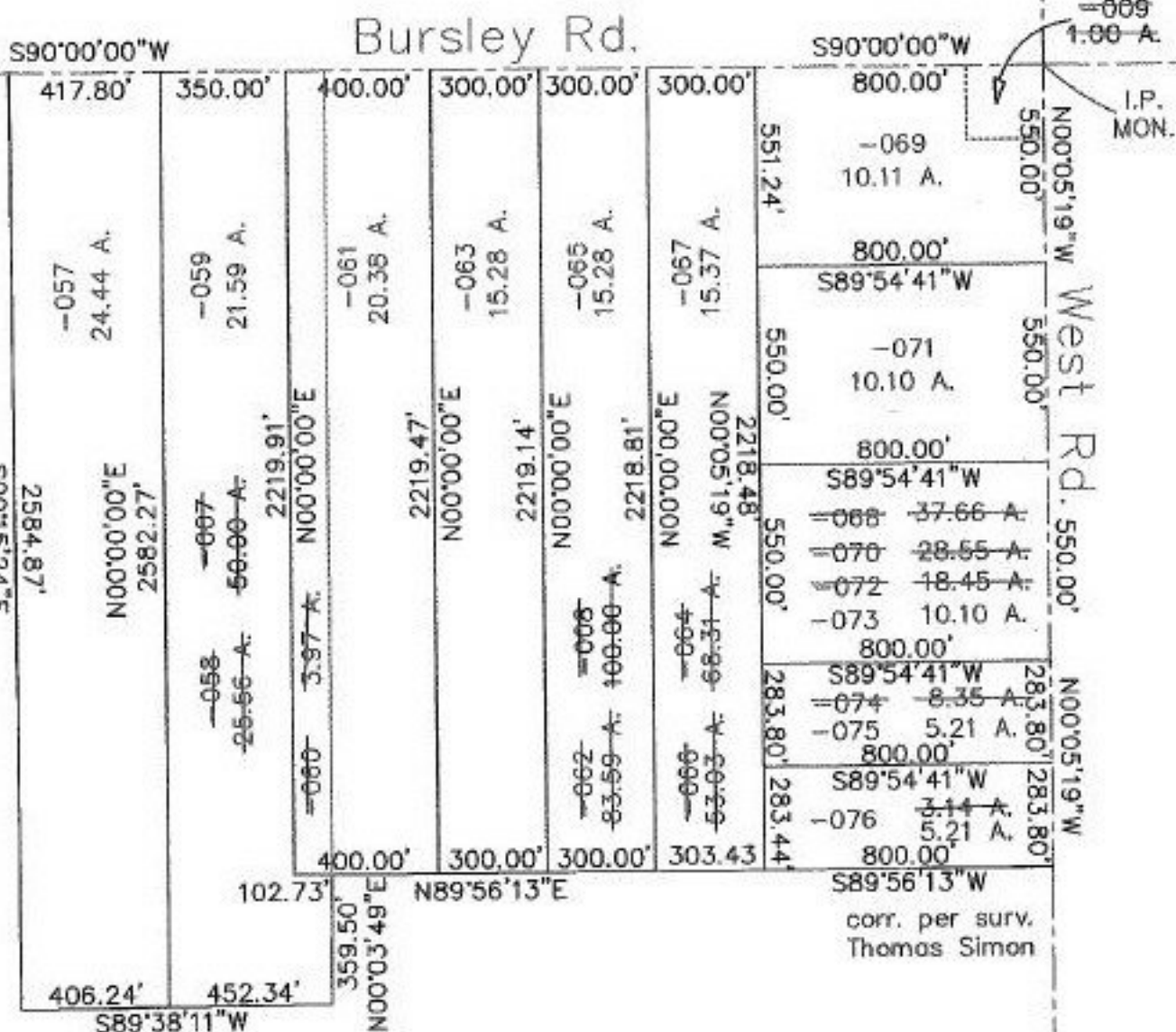


PARENT PARCEL: 21-12-000-000-007, 008, 009
 CHILD PARCEL: 21-12-000-000-057 thru -076
 STARTING POINT: cl. of Bursley Rd. & West Rd.

NO. 22498



SPLITS/DEEDS PROCESSED
 LORAIN COUNTY TAX MAP DEPARTMENT
 226 MIDDLE AVE. ELYRIA, OHIO

SURVEYED BY: Thomas A. Simon
 CLOSURE: 0.17:10,000
 MAP PAGE(S): 21-D
 APPROVED BY: kac DATE: 4/14/98
 SCALE: 1" = 500' PRIOR INSTRUMENT: DV 625/73

5-18-98