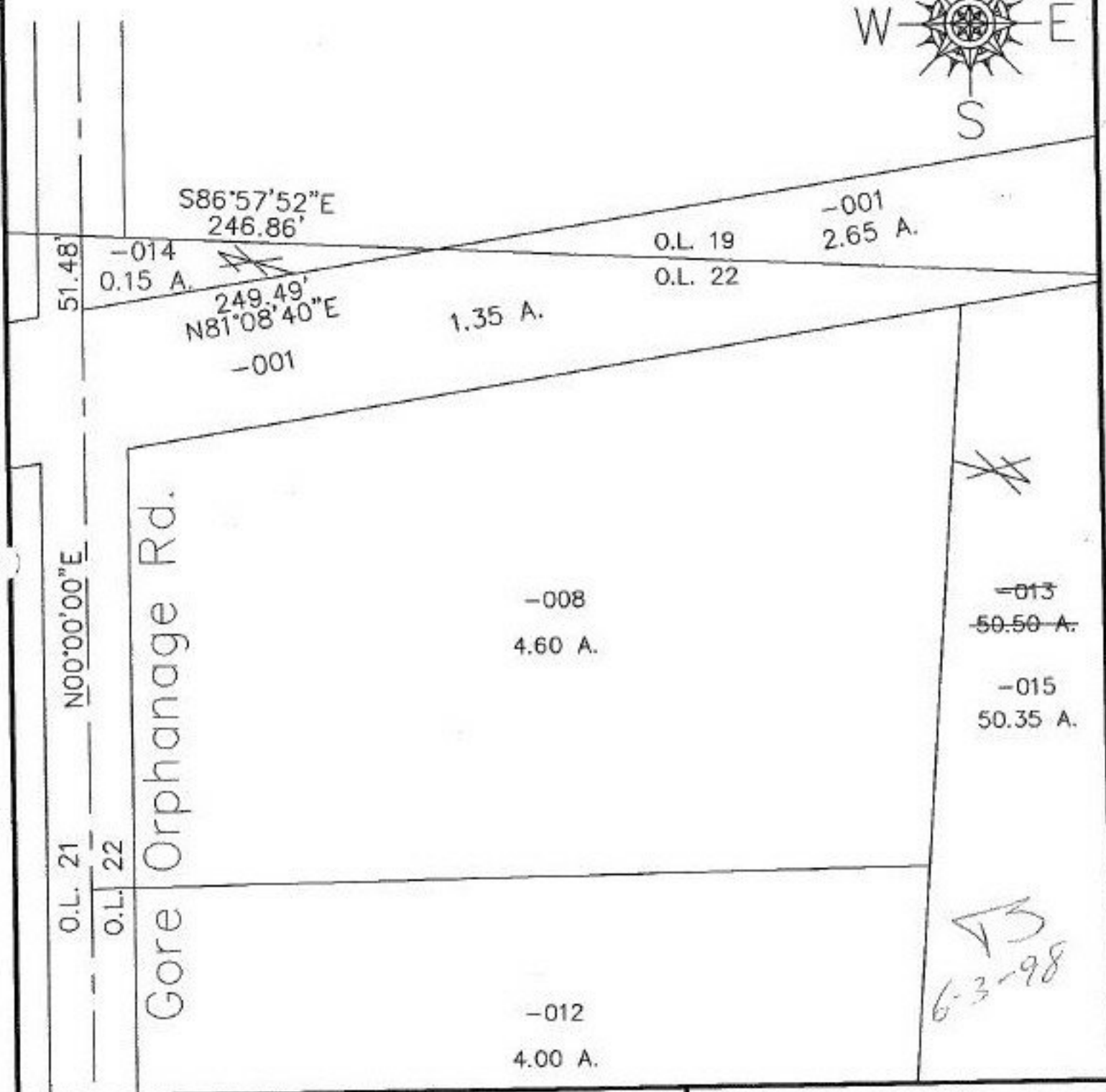


PARENT PARCEL: 13-11-022-000-013

CHILD PARCEL: 13-11-022-000-014, 015

STARTING POINT: c/L of Gore Orphanage Rd. at the NW corner of O.L. 22

NO. 22490



**SPLITS/DEEDS PROCESSED**  
LORAIN COUNTY TAX MAP DEPARTMENT  
228 MIDDLE AVE. ELYRIA, OHIO

SURVEYED BY: James B. Roberts  
CLOSURE: 0.04:10,000  
MAP PAGE(S): 13-A  
APPROVED BY: koc DATE: 4/1/98  
SCALE: 1" = 100' PRIOR INSTRUMENT: 113/900