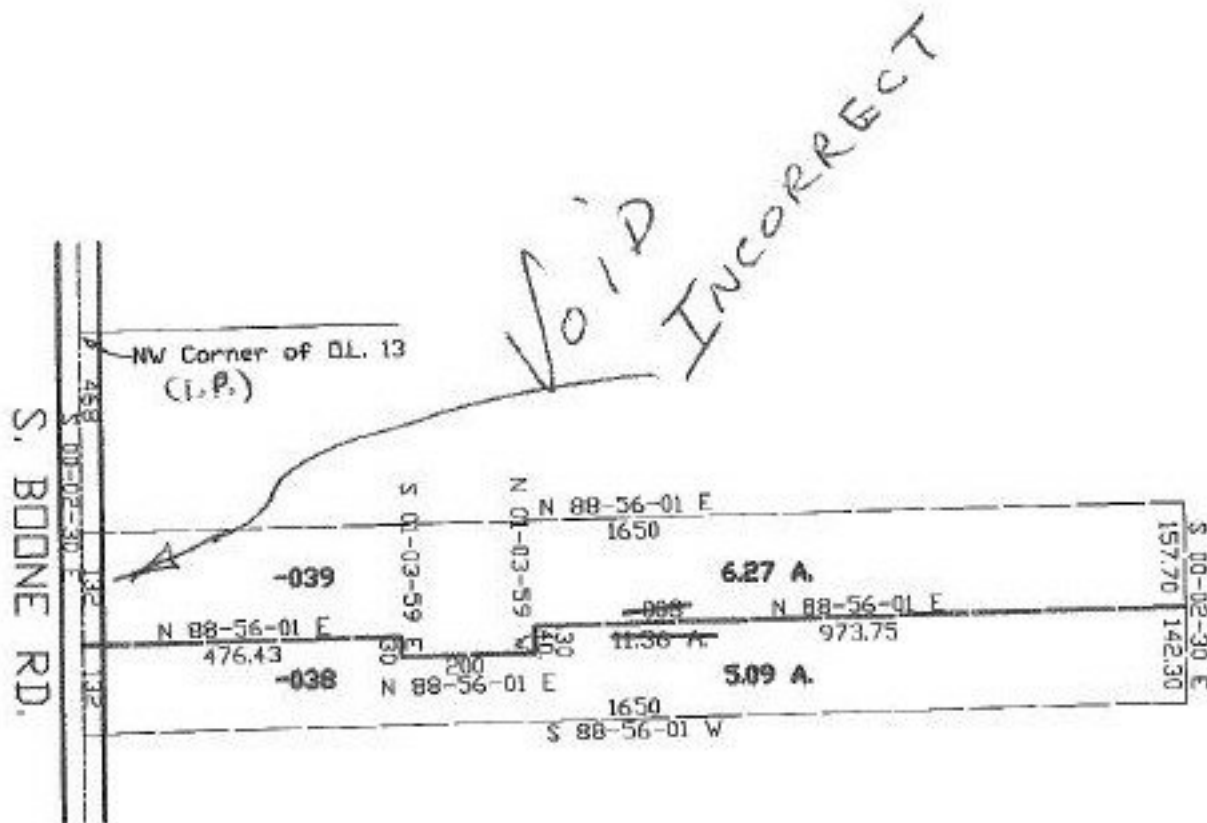


PARENT PARCEL: 12-00-013-000-008

CHILD PARCEL: 12-00-013-000-038 & 039

STARTING POINT: NW CORNER LOT. NO. 13 & d. OF S. BOONE RD.

NO. 22483



SPLITS/DEEDS PROCESSED
 LORAIN COUNTY TAX MAP DEPARTMENT
 226 MIDDLE AVE. ELYRIA, OHIO

SURVEYED BY: GEORGE A. HOEMANN

CLOSURE: 0.01:10,000

MAP PAGE(S): 12-00-013-A

APPROVED BY: TJS DATE: 03/24/98

SCALE: 1" = 300' PRIOR INSTRUMENT: 1361/59