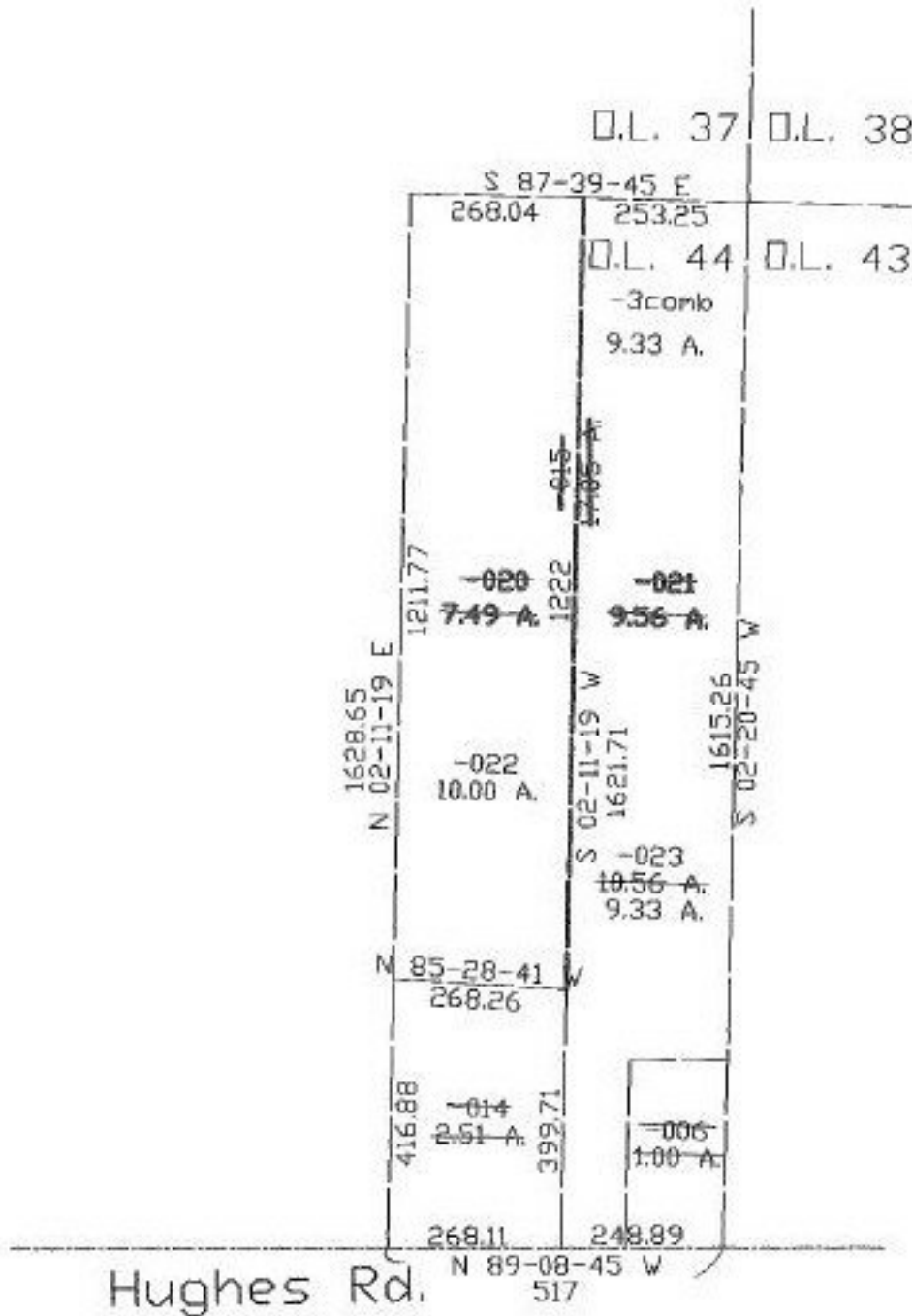


PARENT PARCEL: 14-00-044-000-006, 014, 015
 CHILD PARCEL: 14-00-044-000-020, 021, 022, 023
 STARTING POINT: cl. of Hughes Rd. & East corner of O.L. 44

NO. 22482



Handwritten: 6-3-95



SPLITS/DEEDS PROCESSED
 LORAIN COUNTY TAX MAP DEPARTMENT
 226 MIDDLE AVE. ELYRIA, OHIO

SURVEYED BY: Rodger G. Simon
 CLOSURE: 0.02-10.000
 MAP PAGE(S): 14-C
 APPROVED BY: kac DATE: 3/25/98
 SCALE: 1" = 300' PRIOR INSTRUMENT: OR 270/219