

PARENT PARCEL: 12-00-046-000-005

NO. 22482-A

CHILD PARCEL:

STARTING POINT: cl. of Elyria-Twinsburg Rd. & cl. of Akins Rd. (vac.)

6.47 A. per DV 657/405  
~~1.78 A. -006~~  
 4.69 A.  
~~+0.58 A.~~ was not included in description  
 5.27 A.  
~~+0.13 A.~~ was not included in description  
**5.40 A.**

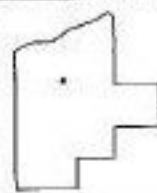
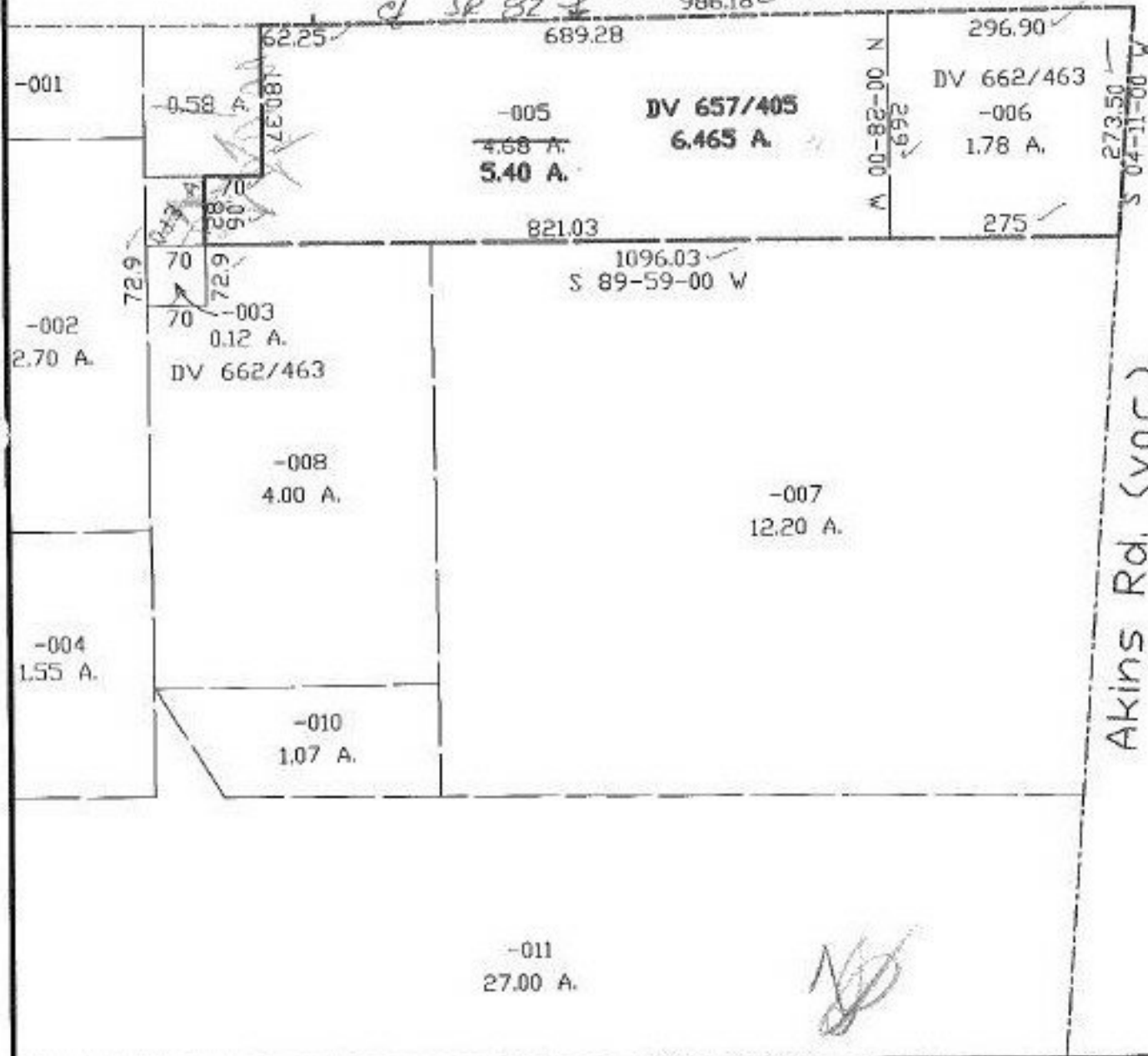
corr. per deed  
 DV 657/405  
 & map dept. calc.



Elyria-Twinsburg Rd.

N 89-14-00 E  
986.18

*cl. SP 32*



**SPLITS/DEEDS PROCESSED**  
 LORAIN COUNTY TAX MAP DEPARTMENT  
 226 MIDDLE AVE. ELYRIA, OHIO

SURVEYED BY: Roy E. Hollis  
 CLOSURE: \_\_\_\_\_  
 MAP PAGE(S): 12-00-046-A  
 APPROVED BY: kac DATE: 3/26/98  
 SCALE: 1" = 200' PRIOR INSTRUMENT: DV 657/405