

PARENT PARCEL: 06-26-084-000-005

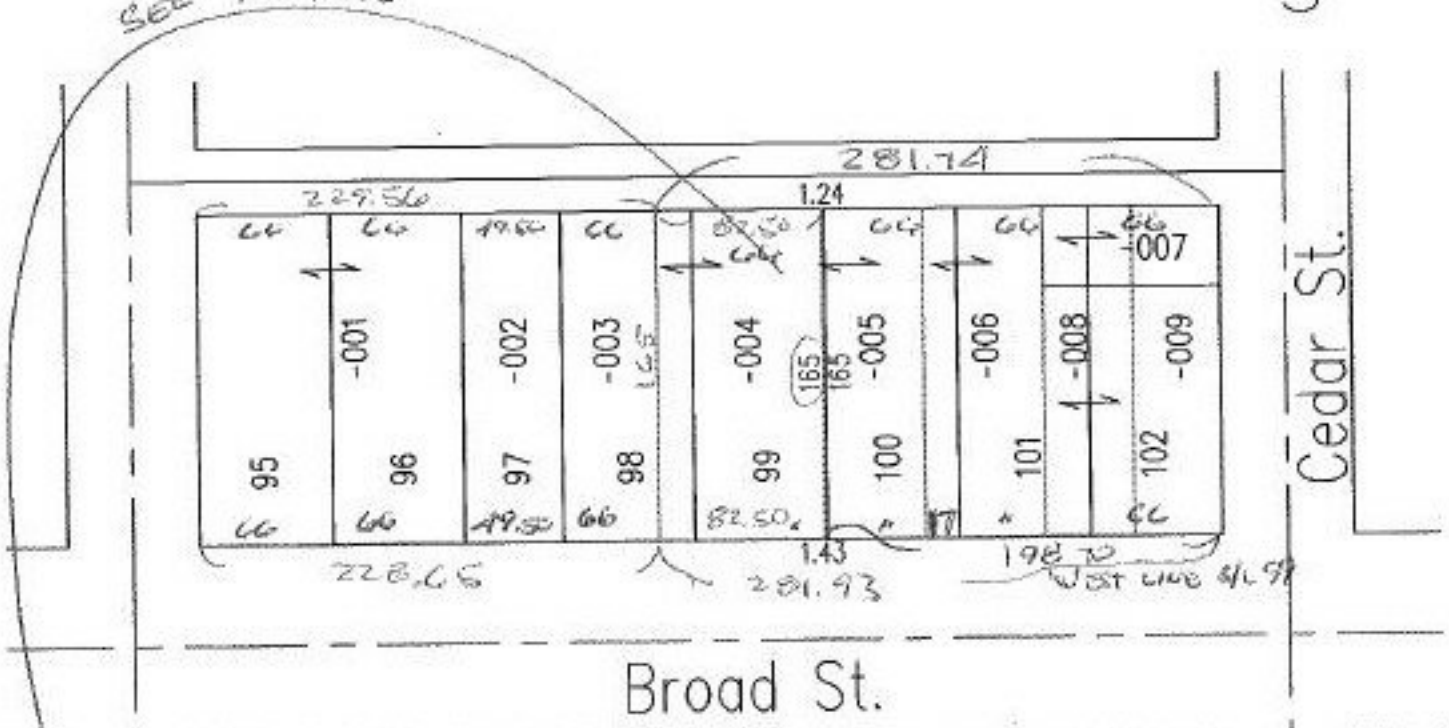
NO. 22481-A

CHILD PARCEL:

STARTING POINT: N. line of Broad St. & SE corner of S/L 99



SEE DETAIL

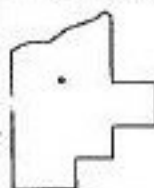


DETAIL: N.T.S.  
Sublot 165  
165' 1/2  
99

DV 301/252  
pt. of 06-26-084-000-005  
in S/L 99

1.24' N.E. CORNER S/L 99  
1.73' S.E. CORNER S/L 99  
198.10' FROM W. PLW OF CEDAR ST.

ORV 745/900  
ORV 668/58  
RESULT OF J.W. WARDEN  
SURVEY SEPT. 1939



**SPLITS/DEEDS PROCESSED**  
LORAIN COUNTY TAX MAP DEPARTMENT  
226 MIDDLE AVE. ELYRIA, OHIO

SURVEYED BY: J.W. WARDEN SEPT. 1939  
CLOSURE: cannot run Pt. of a sublot  
MAP PAGE(S): 6-120  
APPROVED BY: kac DATE: 5/4/98  
SCALE: 1" = 100' PRIOR INSTRUMENT: DV 301/252