

PARENT PARCEL: 12-00-075-104-011, 020

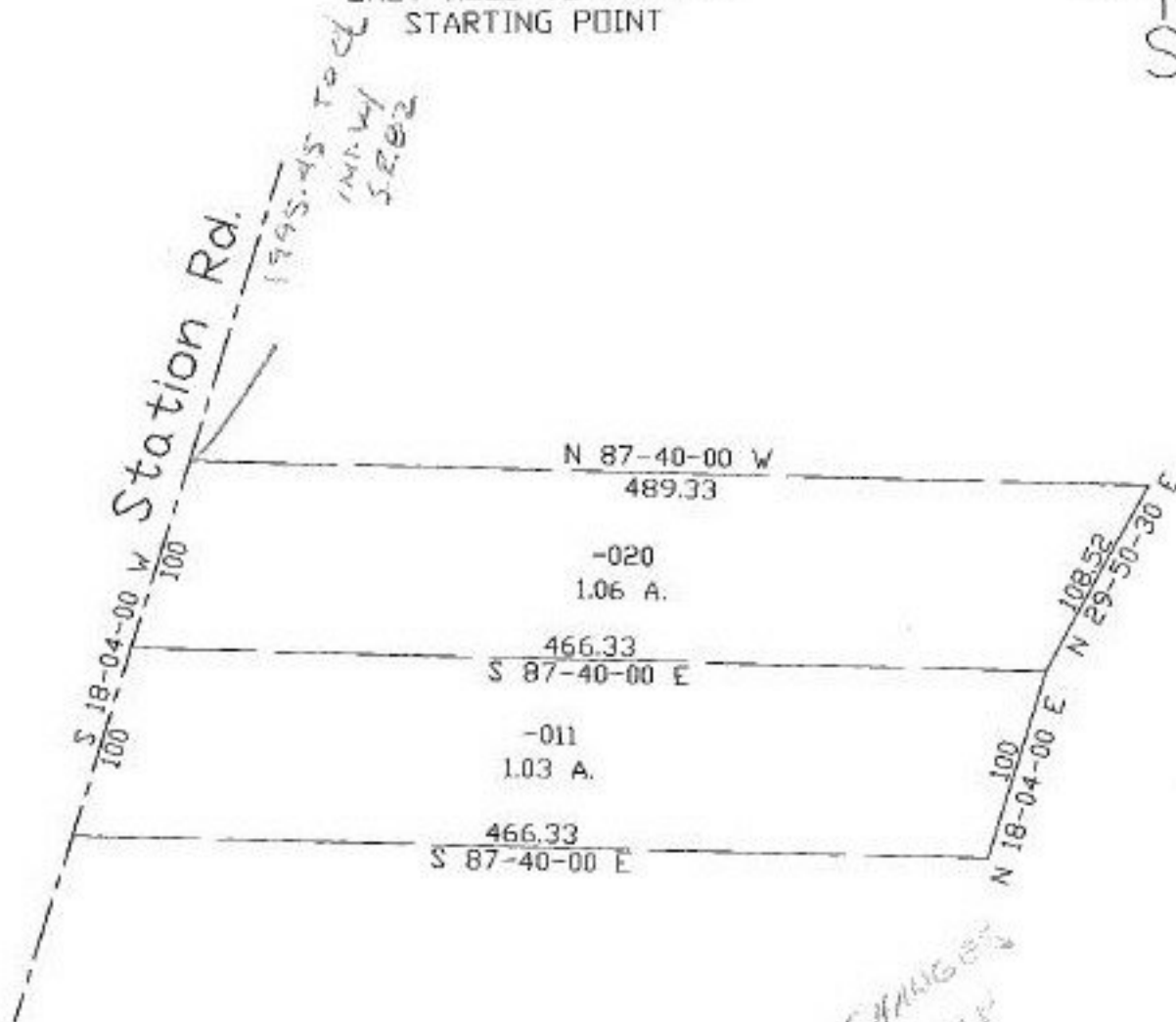
CHILD PARCEL:

STARTING POINT: unacceptable starting point

NO. 22478-D

### DEED CHECK

ONLY NEED TO FIX THE  
STARTING POINT



No. CHANGES  
TO MAP  
*[Signature]*



**SPLITS/DEEDS PROCESSED**  
LORAIN COUNTY TAX MAP DEPARTMENT  
226 MIDDLE AVE. ELYRIA, OHIO

SURVEYED BY: Gary E. Penfound  
CLOSURE: 0.06:10,000  
MAP PAGE(S): 12-00-075-B  
APPROVED BY: kac DATE: 3/23/98  
SCALE: 1" = 100' PRIOR INSTRUMENT: OR 562/562